

ARK TRAILER ACCESSORIES

CODE NO.	DESCRIPTION
56122	MALE BLADE CONNECTOR (4MM)
56134	FEMALE BLADE CONNECTORS (2.5 - 3MM)
56136	FEMALE BLADE CONNECTORS (4MM)
56144	FEMALE BLADE CONNECTORS, FULLY INSULATED (4MM)
56146	MALE BULLET CONNECTOR (2.5 - 3MM)
56148	MALE BULLET CONNECTOR (4MM)
56150	FEMALE BULLET CONNECTOR (2.5 - 3MM)
56152	FEMALE BULLET CONNECTOR (4MM)
56172	RING TERMINAL (2.5 - 3MM) - DIAM. 5MM
56174	RING TERMINAL (2.5 - 3MM) - DIAM. 6.3MM
56178	RING TERMINAL (4MM) - DIAM 5MM
56180	RING TERMINAL (4MM) - DIAM. 6.3MM
91725	SKID MOULD
91801	6" WOOD YOKE - STRAIGHT 20MM STEM SIZE, GALVANISED
92052	8" STEM BRACKET, 6" X 20MM SQUARE STEM, GALVANISED
92054	12" ADJUSTABLE TWIN STEM BRACKET
92150	2" X 1" TUBE SIDE ADJUSTER, 50MM X 25MM, GALVANISED
92151	2" X 2" TUBE SIDE ADJUSTER, 50MM X 50MM, GALVANISED
92171	6" EYE POST SUITS 16MM PIN, GALVANISED
100-2.5/W	100MM X 2.5MM BLACK CABLE TIE IN PACKETS OF 100
11603/30B	SINGLE CORE/ 16STR CABLE BLACK - 30M
11603/30G	SINGLE CORE/ 16 STR CABLE GREEN - 30M
11603/30L	SINGLE CORE/16 STR CABLE BLUE - 30M
11603/30N	SINGLE CORE/ 16 STR CABLE BROWN - 30M
11603/30R	SINGLE CORE/ 16 STR CABLE RED - 30M
11603/30W	SINGLE CORE/ 16 STR CABLE WHITE - 30M
11603/30Y	SINGLE CORE/ 16 STR YELLOW - 30M
11603B	SINGLE CORE / 16 STR CABLE BLACK - 100M
11603G	SINGLE CORE/ 16 STR CABLE GREEN - 100M
11603L	SINGLE CORE/ 16 STR CABLE BLUE - 100M
11603N	SINGLE CORE CABLE BROWN - 100M
11603R	SINGLE CORE/ 16 STR CABLE RED - 100M
11603W	SINGLE CORE/ 16 STR CABLE WHITE - 100M
11603Y	SINGLE CORE/ 16 STR CABLE YELLOW - 100M
12603/100G	SINGLE CORE/ 26 STR CABLE GREEN - 100M
12603/100L	SINGLE CORE/ 26 STR CABLE BLUE - 100M
12603/100R	SNGLE CORE/26 STR CABLE RED - 100M
12603/100W	SINGLE CORE/ 26 STR CABLE WHITE - 100M
12603/100Y	4MM SINGLE CORE /100M / YELLLOW
12603B	SINGLE CORE/ 26 STR CABLE BLACK - 30M
12603D	SINGLE CORE DOUBLE INSULATED 4MM X 26 STRAND ELECTRICAL CABLE - 30M
12603G	SINGLE CORE/ 26 STR CABLE GREEN - 30M
12603L	SINGLE CORE/ 26 STR CABLE BLUE - 30M
12603N	SINGLE CORE/ 26 STR CABLE BROWN - 30M
12603R	SINGLE CORE/ 26 STR CABLE RED - 30M
12603W	SINGLE CORE/ 26 STR CABLE WHITE - 30M
12603Y	SINGLE CORE/ 26 STR CABLE YELLOW - 30M
14103/30B	SINGLE CORE/ 41 STR CABLE BLACK - 30M
14103/30R	SINGLE CORE/ 41 STR CABLE RED - 30M
14103/30Y	SINGLE CORE/ 41 STR CABLE YELLOW - 30M
14103B	SINGLE CORE/ 41 STR CABLE BLACK - 100M
14103L	SINGLE CORE/ 41 STR CABLE BLUE - 100M
14103N	SINGLE CORE/ 41 STR CABLE BROWN - 100M
14103R	SINGLE CORE/ 41 STR CABLE RED - 100M
14103W	SINGLE CORE/ 41 STR CABLE WHITE - 100M

ARK TRAILER ACCESSORIES

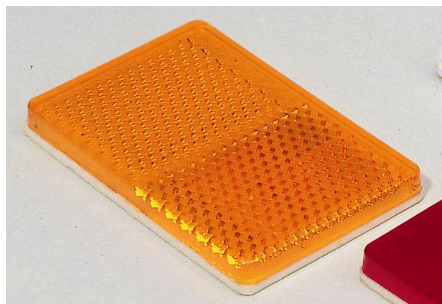
CODE NO.	DESCRIPTION
150-3.5/W	150MM X 3.5MM BLACK CABLE TIE IN PACKETS OF 100
16503/100B	SINGLE CORE / 65 STR CABLE BLACK - 100M
16503/100R	SINGLE CORE / 65 STR CABLE RED - 100M
16503B	SINGLE CORE/ 65 STR CABLE BLACK - 30M
16503G	SINGLE CORE/ 65 STR CABLE GREEN - 30M
16503L	SINGLE CORE / 65 STR CABLE BLUE - 30M
16503N	SINGLE CORE/ 65 STR CABLE BROWN - 30M
16503R	SINGLE CORE/ 65 STR CABLE RED - 30M
16503W	SINGLE CORE / 65 STR CABLE WHITE - 30M
16503Y	SINGLE CORE / 65 STR CABLE YELLOW - 30M
200-4.7/W	200MM X 4.7MM BLACK CABLE TIE IN PACKETS OF 100
21603F	2 CORE - 3MM CABLE -FIGURE 8 - ON 100 METRE REELS
21603F/30	2 CORE - 3MM CABLE -FIGURE 8 - ON 30 METRE REELS
21603S	2 CORE - 3MM CABLE -SHEATHED - ON 100 METRE REEL
21603S/30	2 CORE - 3MM CABLE -SHEATHED - ON 30 METRE REEL
22603F	2 CORE - 4MM CABLE - FIGURE 8 - ON 100 METRE REEL
22603F/30	2 CORE - 4MM CABLE - FIGURE 8 - ON 30 METRE REEL
22603S/100	2 CORE - 4MM CABLE - SHEATHED - ON 100 METRE REEL
22603S/30	2 CORE - 4MM CABLE - SHEATHED - ON 30 METRE REEL
24103S	2 CORE - 5MM CABLE - SHEATHED - ON 30M REEL
300-4.6/W	300MM X 4.6MM BLACK CABLE TIE IN PACKETS OF 100
380-4.7/W	380MM X 4.7MM BLACK CABLE TIE IN PACKETS OF 100
47032/100	4 CORE/ 7 STRAND CABLE ON 100 METRE REEL
47032/500	4 CORE/ 7 STRAND CABLE ON 500 METRE REEL
510TB	5 CORE TINNED LED LAMP TRAILER CABLE X 10 METRES IN BLISTER BACK
51603/30	5 CORE/ 16 STRAND CABLE ON 30 METRE REEL
52603/100	5 CORE/ 25 STRAND CABLE ON 100 METRE REELS
52603/30	5 CORE/ 25 STRAND CABLE ON 30 METRE REEL
55B	5 CORE TRAILER CABLE X 5 METRES IN BLISTER PACK
55TB	5 CORE TINNED LED LAMP TRAILER CABLE X 5 METRES IN BLISTER BACK
57032/100	5 CORE/ 7 STRAND CABLE ON 100 METRE REEL
57032/30	5 CORE/ 7 STRAND CABLE ON 30 METRE REEL
57032/500	5 CORE/ 7 STRAND CABLE ON 500 METRE REEL
5903/100	5 CORE/ 9 STRAND CABLE ON 100 METRE REEL
5903/30	5 CORE/ 9 STRAND CABLE ON 30 METRE REEL
5LS27LP	CONNECTS 5 PIN LARGE ROUND SOCKET ON CAR TO 7 PIN LARGE ROUND PLUG ON TRAILER IN BLISTER PACK
5LS2FP	CONNECTS 5 PIN LARGE ROUND SOCKET ON CAR TO 7 PIN FLAT PLUG ON TRAILER IN BLISTER PACK
6S27LP	CONNECTS 6 PIN SMALL ROUND SOCKET ON CAR TO 7 PIN LARGE ROUND PLUG ON TRAILER IN BLISTER PACK
6S27P	CONNECTS 6 PIN SMALL ROUND SOCKET ON CAR TO 7 PIN SMALL ROUND PLUG ON TRAILER IN BLISTER PACK
6S2FP	CONNECTS 6 PIN SMALL ROUND SOCKET ON CAR TO 7 PIN FLAT PLUG ON TRAILER IN BLISTER PACK
710B	7 CORE TRAILER CABLE X 10 METRES IN BLISTER PACK
71603/100	7 CORE/ 16 STRAND CABLE ON 100 METRE REEL
71603/30	7 CORE/ 16 STRAND CABLE ON 30 METRE REEL
72603/100	7 CORE/ 26 STRAND CABLE ON 100 METRE REEL
72603/30	7 CORE/ 26 STRAND CABLE ON 30 METRE REEL
77032/100	7 CORE/ 7 STRAND CABLE ON 100 METRE REEL
77032/30	7 CORE/ 7 STRAND CABLE ON 30 METRE REEL
77032/500	7 CORE/ 7 STRAND CABLE ON 500 METRE REEL
7903/100	7 CORE/ 9 STRAND CABLE ON 100 METRE REEL
7903/30	7 CORE/ 9 STRAND CABLE ON 30 METRE REEL

ARK TRAILER ACCESSORIES



CODE NO.	DESCRIPTION
7LS25LP	CONNECTS 7 PIN LARGE ROUND SOCKET ON CAR TO 5 PIN LARGE ROUND PLUG ON TRAILER IN BLISTER PACK
7LS26P	CONNECTS 7 PIN LARGE ROUND SOCKET ON CAR TO 6 PIN SMALL ROUND PLUG ON TRAILER IN BLISTER PACK
7LS27P	CONNECTS 7 PIN LARGE ROUND SOCKET ON CAR TO 7 PIN SMALL ROUND PLUG ON TRAILER IN BLISTER PACK
7LS2FP	CONNECTS 7 PIN LARGE ROUND SOCKET ON CAR TO 7 PIN FLAT PLUG ON TRAILER IN BLISTER PACK
7S26P	CONNECTS 7 PIN SMALL ROUND SOCKET ON CAR TO 6 PIN SMALL ROUND PLUG ON TRAILER IN BLISTER PACK
7S27LP	CONNECTS 7 PIN SMALL ROUND SOCKET ON CAR TO 7 PIN LARGE ROUND PLUG ON TRAILER IN BLISTER PACK
7S2FP	CONNECTS 7 PIN SMALL ROUND SOCKET ON CAR TO 7 PIN FLAT PLUG ON TRAILER IN BLISTER PACK
A4077FH	40MM SQUARE 77" LONG PRE-ASSEMBLED AXLE WITH FORD DISC HUBS, MECHANICAL CALIPERS AND MOUNTING PLATES
A4079CD	40MM SQUARE 79" LONG PRE-ASSEMBLED AXLE WITH COMMODORE DISC HUBS, MECHANICAL CALIPERS AND MOUNTING PLATES
A4079FH	40MM SQUARE 79" LONG PRE-ASSEMBLED AXLE WITH FORD DISC HUBS, MECHANICAL CALIPERS AND MOUNTING PLATES
A4097CD	40MM SQUARE 97" LONG PRE-ASSEMBLED AXLE WITH COMMODORE DISC HUBS, MECHANICAL CALIPERS AND MOUNTING PLATES
A4097FH	40MM SQUARE 97" LONG PRE-ASSEMBLED AXLE WITH FORD DISC HUBS, MECHANICAL CALIPERS AND MOUNTING PLATES
A4578FD	45MM SQUARE 78" LONG PRE-ASSEMBLED AXLE WITH FORD DISC HUBS, MECHANICAL CALIPERS AND MOUNTING PLATES
A4597FD	45MM SQUARE 97" LONG PRE-ASSEMBLED AXLE WITH FORD DISC HUBS, MECHANICAL CALIPERS AND MOUNTING PLATES
A632	1000KG STAR NUT TRAILER COUPLING
A760	3000KG 75MM FIXED RING COUPLING
A788	2000KG WELD-ON COUPLING WITH ADJUSTABLE SCREW
A790	2000KG 75MM RING OVER-RIDE COUPLING WITH REVERSING LOCK
A790HBP	LIMITED SWIVEL BASE PLATE TO SUIT HYDRAULIC OVER-RIDE A790 COUPLING
A790MBP	LIMITED SWIVEL BASE PLATE TO SUIT MECHANICAL OVER-RIDE A790 COUPLING
A791	2000KG 75MM RING OVER-RIDE COUPLING WITHOUT BRAKE FACILITY
A795	6000KG 75MM FIXED RING COUPLING
ADS50	ADJUSTER BOLT & NUT TO SUIT 50MM BALL COUPLINGS
AH17	INLINE HARNESS WITH ISOLATING DIODE SUITS 7 PIN SOCKETS, WITH CABLE AND FUSE
AHP12	12 PIN SOCKET WITH BUILT IN ISOLATING DIODE, COMPLETE WITH CABLE AND FUSE

ARK TRAILER ACCESSORIES



CODE NO.	DESCRIPTION
AN34	AXLE NUTS 3/4"
ANPW34B	AXLE NUTS, WASHERS & SPLIT PINS - BLISTER PACK
AR2070	AMBER SLIMLINE SELF ADHESIVE REFLECTOR - 20MM X 70MM, BULK
AR2285	AMBER SELF ADHESIVE REFLECTOR - ADR APPROVED - 22MM X 85MM, BULK
AR2285B	2 X AMBER SELF ADHESIVE REFLECTORS - ADR APPROVED - IN BLISTER PACK
AR4060	AMBER SELF ADHESIVE REFLECTOR - 40MM X 60MM, BULK
ASC99	SPARE IMPACT RESISTANCE OUTER CLEAR COVER, SUITS SUBMERSIBLE LAMP, BULK
ASL99L	SPARE INNER ACRYLIC LEFT LENS, SUITS SUBMERSIBLE LAMP, BULK
ASL99R	SPARE INNER ACRYLIC RIGHT LENS, SUITS SUBMERSIBLE LAMP, BULK
ASO99	SPARE EPDM O-RING SEAL, SUITS SUBMERSIBLE LAMP, BULK
ASP34	AXLE SPLIT PIN - 4MM X 32MM
ASS99	SUBMERSIBLE LAMP, SET OF 2, IN BOX
ASS99B	SUBMERSIBLE LAMP SET OF 2, IN BLISTER PACK
ASSC99	SUBMERSIBLE LAMP, SET OF 2 WITH CONNECTED CABLE & 4 WATER PROOF CONNECTORS IN BOX
ATL15	TRAILER LOCK IN BLISTER PACK
ATL155	TRAILER LOCK AND HITCH PIN LOCK IN BLISTER PACK
AW34	AXLE WASHER - 3/4"
AXS3959	AXLE (SOLID) 39MM ROUND X 59" (149.8CM), COMPLETE WITH NUT, SPLIT PIN AND WASHER
AXS3960	AXLE (SOLID) 39MM ROUND X 60" (152.4CM), COMPLETE WITH NUT, SPLIT PIN AND WASHER
AXS3960G	AXLE (SOLID) GALVANISED 39MM ROUND X 60" (152.4CM), COMPLETE WITH NUT, SPLIT PIN AND WASHER
AXS3963	AXLE (SOLID) 39MM ROUND X 63" (160CM), COMPLETE WITH NUT, SPLIT PIN AND WASHER
AXS3963G	AXLE (SOLID) GALVANISED 39MM ROUND X 63" (160CM), COMPLETE WITH NUT, SPLIT PIN AND WASHER
AXS3964	AXLE (SOLID) 39MM ROUND X 64" (162.5CM), COMPLETE WITH NUT, SPLIT PIN AND WASHER
AXS3964G	AXLE (SOLID) GALVANISED 39MM ROUND X 64" (162.5CM), COMPLETE WITH NUT, SPLIT PIN AND WASHER
AXS3965	AXLE (SOLID) 39MM ROUND X 65" (165.1CM), COMPLETE WITH NUT, SPLIT PIN AND WASHER
AXS3966	AXLE (SOLID) 39MM ROUND X 66" (167.6CM), COMPLETE WITH NUT, SPLIT PIN AND WASHER
AXS3966G	AXLE (SOLID) GALVANISED 39MM ROUND X 66" (167.64CM), COMPLETE WITH NUT, SPLIT PIN AND WASHER
AXS3967	AXLE (SOLID) 39MM ROUND X 67" (170CM), COMPLETE WITH NUT, SPLIT PIN AND WASHER
AXS3968	AXLE (SOLID) 39MM ROUND X 67" (172.7CM), COMPLETE WITH NUT, SPLIT PIN AND WASHER
AXS3968G	AXLE (SOLID) GALVANISED 39MM ROUND X 68" (172.7CM), COMPLETE WITH NUT, SPLIT PIN AND WASHER

ARK TRAILER ACCESSORIES



CODE NO.	DESCRIPTION
AXS3971	AXLE (SOLID) 39MM ROUND X 71" (180CM), COMPLETE WITH NUT, SPLIT PIN AND WASHER
AXS3971G	AXLE (SOLID) GALVANISED 39MM ROUND X 71" (180CM), COMPLETE WITH NUT, SPLIT PIN AND WASHER
AXS3972	AXLE (SOLID) 39MM ROUND X 72" (182.8CM), COMPLETE WITH NUT, SPLIT PIN AND WASHER
AXS3972G	AXLE (SOLID) GALVANISED 39MM ROUND X 72" (182.88CM), COMPLETE WITH NUT, SPLIT PIN AND WASHER
AXS3973	AXLE (SOLID) 39MM ROUND X 73" (185.4CM), COMPLETE WITH NUT, SPLIT PIN AND WASHER
AXS3973G	AXLE (SOLID) GALVANISED 39MM ROUND X 77" (185.4CM), COMPLETE WITH NUT, SPLIT PIN AND WASHER
AXS3974	AXLE (SOLID) 39MM ROUND X 74" (187.9CM), COMPLETE WITH NUT, SPLIT PIN AND WASHER
AXS3976G	AXLE (SOLID) GALVANISED 39MM ROUND X 76" (189.3CM), COMPLETE WITH NUT, SPLIT PIN AND WASHER
AXS3977	AXLE (SOLID) 39MM ROUND X 77" (195.5CM), COMPLETE WITH NUT, SPLIT PIN AND WASHER
AXS3978	AXLE (SOLID) 39MM ROUND X 78" (198CM), COMPLETE WITH NUT, SPLIT PIN AND WASHER
AXS3979	AXLE (SOLID) 39MM ROUND X 79" (200CM), COMPLETE WITH NUT, SPLIT PIN AND WASHER
AXS4065	AXLE (SOLID) 40MM SQUARE X 65" (165.1CM), COMPLETE WITH NUT, SPLIT PIN AND WASHER
AXS4066	AXLE (SOLID) 40MM SQUARE X 66" (167.6CM), COMPLETE WITH NUT, SPLIT PIN AND WASHER
AXS4067	AXLE (SOLID) 40MM SQUARE X 67" (170CM), COMPLETE WITH NUT, SPLIT PIN AND WASHER
AXS4068	AXLE (SOLID) 40MM SQUARE X 68" (172.7CM), COMPLETE WITH NUT, SPLIT PIN AND WASHER
AXS4068G	AXLE (SOLID) GALVANISED 40MM SQUARE X 68" (172.7CM), COMPLETE WITH NUT, SPLIT PIN AND WASHER
AXS4070	AXLE (SOLID) 40MM SQUARE X 70" (177.8CM), COMPLETE WITH NUT, SPLIT PIN AND WASHER
AXS4071	AXLE (SOLID) 40MM SQUARE X 71" (180CM), COMPLETE WITH NUT, SPLIT PIN AND WASHER
AXS4071G	AXLE (SOLID) GALVANISED 40MM SQUARE X 71" (180CM), COMPLETE WITH NUT, SPLIT PIN AND WASHER
AXS4073	AXLE (SOLID) 40MM SQUARE X 73" (185.4CM), COMPLETE WITH NUT, SPLIT PIN AND WASHER
AXS4075	AXLE (SOLID) 40MM SQUARE X 75" (190CM), COMPLETE WITH NUT, SPLIT PIN AND WASHER
AXS4075G	AXLE (SOLID) GALVANISED 40MM SQUARE X 76" (193CM), COMPLETE WITH NUT, SPLIT PIN AND WASHER
AXS4076	AXLE (SOLID) 40MM SQUARE X 75" (190CM), COMPLETE WITH NUT, SPLIT PIN AND WASHER

ARK TRAILER ACCESSORIES



CODE NO.	DESCRIPTION
AXS4077	AXLE (SOLID) 40MM SQUARE X 77" (195.5CM), COMPLETE WITH NUT, SPLIT PIN AND WASHER
AXS4077G	AXLE (SOLID) GALVANISED 40MM SQUARE X 77" (195.5CM), COMPLETE WITH NUT, SPLIT PIN AND WASHER
AXS4078	AXLE (SOLID) 40MM SQUARE X 78" (198.1CM), COMPLETE WITH NUT, SPLIT PIN AND WASHER
AXS4079	AXLE (SOLID) 40MM SQUARE X 79" (200CM), COMPLETE WITH NUT, SPLIT PIN AND WASHER
AXS4079G	AXLE (SOLID) GALVANISED 40MM SQUARE X 79" (200CM), COMPLETE WITH NUT, SPLIT PIN AND WASHER
AXS4080	AXLE (SOLID) 40MM SQUARE X 80" (203.2CM), COMPLETE WITH NUT, SPLIT PIN AND WASHER
AXS4080G	AXLE (SOLID) GALVANISED 40MM SQUARE X 80" (203.2CM), COMPLETE WITH NUT, SPLIT PIN AND WASHER
AXS4081	AXLE (SOLID) 40MM SQUARE X 81" (205.7CM), COMPLETE WITH NUT, SPLIT PIN AND WASHER
AXS4083	AXLE (SOLID) 40MM SQUARE X 83" (210CM), COMPLETE WITH NUT, SPLIT PIN AND WASHER
AXS4085G	AXLE (SOLID) GALVANISED 40MM SQUARE X 85" (216CM), COMPLETE WITH NUT, SPLIT PIN AND WASHER
AXS4089	AXLE (SOLID) 40MM SQUARE X 89" (226CM), COMPLETE WITH NUT, SPLIT PIN AND WASHER
AXS4089G	AXLE (SOLID) GALVANISED 40MM SQUARE X 89" (226CM), COMPLETE WITH NUT, SPLIT PIN AND WASHER
AXS4091	AXLE (SOLID) 40MM SQUARE X 91" (223.11CM), COMPLETE WITH NUT, SPLIT PIN AND WASHER
AXS4095	AXLE (SOLID) 40MM SQUARE X 95" (241.3CM), COMPLETE WITH NUT, SPLIT PIN AND WASHER
AXS4096	AXLE (SOLID) 40MM SQUARE X 96" (243.8CM), COMPLETE WITH NUT, SPLIT PIN AND WASHER
AXS4097	AXLE (SOLID) 40MM SQUARE X 97" (246.38CM), COMPLETE WITH NUT, SPLIT PIN AND WASHER
AXS4561	AXLE (SOLID) 45MM SQUARE X 61" (154.9M), COMPLETE WITH NUT, SPLIT PIN AND WASHER
AXS4565	AXLE (SOLID) 45MM SQUARE X 65" (165.1M), COMPLETE WITH NUT, SPLIT PIN AND WASHER
AXS4566	AXLE (SOLID) 45MM SQUARE X 66" (167.6M), COMPLETE WITH NUT, SPLIT PIN AND WASHER
AXS4567	AXLE (SOLID) 45MM SQUARE X 67" (170CM), COMPLETE WITH NUT, SPLIT PIN AND WASHER
AXS4571	AXLE (SOLID) 45MM SQUARE X 71" (180CM), COMPLETE WITH NUT, SPLIT PIN AND WASHER
AXS4575	AXLE (SOLID) 45MM SQUARE X 75" (190CM), COMPLETE WITH NUT, SPLIT PIN AND WASHER

ARK TRAILER ACCESSORIES



CODE NO.	DESCRIPTION
AXS4576	AXLE (SOLID) 45MM SQUARE X 76" (193CM), COMPLETE WITH NUT, SPLIT PIN AND WASHER
AXS4577	AXLE (SOLID) 45MM SQUARE X 77" (195.5CM), COMPLETE WITH NUT, SPLIT PIN AND WASHER
AXS4578	AXLE (SOLID) 45MM SQUARE X 78" (198CM), COMPLETE WITH NUT, SPLIT PIN AND WASHER
AXS4579	AXLE (SOLID) 45MM SQUARE X 79" (200CM), COMPLETE WITH NUT, SPLIT PIN AND WASHER
AXS4580G	AXLE (SOLID) GALVANISED 45MM SQUARE X 80" (203.2CM), COMPLETE WITH NUT, SPLIT PIN AND WASHER
AXS4581G	AXLE (SOLID) GALVANISED 45MM SQUARE X 81" (205.7CM), COMPLETE WITH NUT, SPLIT PIN AND WASHER
AXS4585G	AXLE (SOLID) GALVANISED 45MM SQUARE X 85" (215.9CM), COMPLETE WITH NUT, SPLIT PIN AND WASHER
AXS4589	AXLE (SOLID) 45MM SQUARE X 89" (226CM), COMPLETE WITH NUT, SPLIT PIN AND WASHER
AXS4589G	AXLE (SOLID) GALVANISED 45MM SQUARE X 89" (226CM), COMPLETE WITH NUT, SPLIT PIN AND WASHER
AXS4591	AXLE (SOLID) 45MM SQUARE X 97" (246.38CM), COMPLETE WITH NUT, SPLIT PIN AND WASHER
AXS4597	AXLE (SOLID) 45MM SQUARE X 91" (231.1CM), COMPLETE WITH NUT, SPLIT PIN AND WASHER
B250	2.5MM WIRE CLIPS (12) IN BLISTER PACK
B360	FLAT MOUNTING BRACKET SUITABLE FOR SMALL ROUND PLASTIC SOCKET IN BLISTER PACK
B90	ANGLE MOUNTING BRACKET SUITABLE FOR SMALL ROUND PLASTIC SOCKET IN BLISTER PACK
BAT140	130AH DEEP CYCLE BATTERY, WET TYPE 200RC MINS @ 25AMPS, STANDARD TERMINALS
BATSTRAP	BATTERY BOX STRAP, BULK
BB27	STANDARD BATTERY BOX - INTERNAL SIZE W180 X L275 X H200MM - WITH STRAP, BULK
BB32	LARGE BATTERY BOX - INTERNAL SIZE W185 X L325 X H200MM - WITH STRAP, BULK
BBA3D	ARK BIKE ADD - ON BAR, SILVER FINISH IN DISPLAY CARTON
BCA100G	BRAKE ARM GALVANISED - TO SUIT MECHANICAL BRAKE CALIPER, SPARE PART
BCB1150	BRAKE CALLIPER MOUNTING BOLT
BCC04B	4 X 4MM GALVANISED PLATED BRAKE CABLE CLAMPS - BLISTER
BCC04G	4MM GALVANISED BRAKE CABLE CLAMP
BCC05G	5MM GALVANISED BRAKE CABLE CLAMP
BCC4	BRAKE CABLE 4MM, 7X7 GALVANISED - 500M ROLL

ARK TRAILER ACCESSORIES



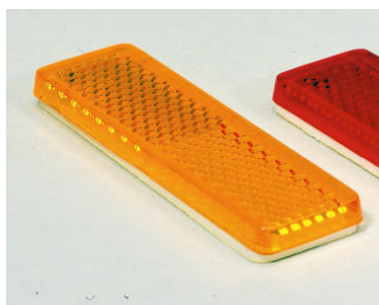
CODE NO.	DESCRIPTION
BCC4B	BRAKE CABLE 8M X 4MM, 7X7 GALVANISED WIRE CABLE WITH 4 X 4MM CLAMPS, BLISTER.
BCCB4	BRAKE CABLE 4MM, 7X7 GALVANISED WITH BLUE PVC COATING - 500M ROLL
BCH100G	BRAKE HAMMER GALVANISED - TO SUIT MECHANICAL BRAKE CALIPER, SPARE PART
BCHT3D	ARK BIKE CARRIER, FITTED WITH REAR LAMPS WIRED TO FLAT PLUG, TILT TYPE, HITCH MOUNTING, SILVER FINISH
BCS16	BRAKE CALIPER SPRING, SPARE PART
BCS50	TOWBALL KIT: 3.5T.- 50MM CHROME TOWBALL, SHIN PROTECTOR & TOWBALL COVER IN BLISTER PACK
BK32	TRAILER BEARING KIT - HOLDEN - IN BLISTER PACK
BK35	TRAILER BEARING KIT - FORD - IN BLISTER PACK
BR100G	GALVANIZED OVER-RIDE COUPLING BRAKE ARM SUITS 100 X 100MM DRAWBARS
BR50G	GALVANIZED OVER-RIDE COUPLING BRAKE ARM SUITS 50MM X 75MM & 50MM X 100MM DRAWBARS
BR75G	GALVANIZED OVER-RIDE COUPLING BRAKE ARM SUITS 75MM X 75MM & 75MM X 100MM DRAWBARS
BRB3D	ARK CLASSIC, BALL MOUNT, FITTED WITH LICENCE LAMP WIRED TO FLAT PLUG, SILVER FINISH WITH BLUE PADS
BRBM3D	ARK BOOTY RACK IN BLACK, DISPLAY CARTON
BRBT3D	ARK CLASSIC TILT, TILT TYPE, BALL MOUNT, FITTED WITH LICENCE LAMP WIRED TO FLAT PLUG, SILVER FINISH
BRBV4D	ARK FOUR BIKE VELCRO RACK, BALL MOUNT, DISPLAY CARTON
BRC3D	ARK EASY RACK, GOOSE NECK CLAMP, INCLUDES 4MM SPACER, SILVER FINISH WITH BLUE STRAP
BRHT3D	ARK CLASSIC PRO, TILT TYPE, HITCH MOUNTING, FITTED WITH LICENCE LAMP WIRED TO FLAT PLUG, SILVER FINISH
BS32	HOLDEN TYPE BEARING SEAL - BULK PACK
BS35	FORD TYPE BEARING SEAL - BULK PACK
BS7	7 PIN LARGE ROUND BOOT SOCKET IN POLY BAG
BSF7	7 PIN FLAT BOOT SOCKET X 1.4 FLAT CABLE & 7 CLIPS IN POLY BAG
BSF7B	7 PIN FLAT BOOT SOCKET X 1.25 FLAT CABLE & 7 CLIPS IN SLIDE CARD
BSG20D	BOW SHACKLE - 20MM GALVANISED - IN DISPLAY BOX
BSL7	7 PIN LARGE ROUND BOOT SOCKET CONNECTED TO. 1.4M FLAT CABLE WITH 7 WIRE CLIPS IN POLY BAG
BSL7B	7 PIN LARGE ROUND BOOT SOCKET CONNECTED TO. 1.25M FLAT CABLE WITH 7 WIRE CLIPS IN BLISTER PACK
BSS06B	BOW SHACKLE - 6MM STAINLESS STEEL - IN BLISTER
BSS08B	BOW SHACKLE - 8MM STAINLESS STEEL - IN BLISTER
BSS10B	BOW SHACKLE - 10MM STAINLESS STEEL - IN BLISTER

ARK TRAILER ACCESSORIES



CODE NO.	DESCRIPTION
CL70	RED/AMBER CLEARANCE LAMP - ADR APPROVED - GLOBES INCLUDED, BULK
CM100G	GALVANIZED MECHANICAL CALIPER COMPLETE WITH PADS AND MOUNTING BOLTS
CM100GD	GALVANIZED MECHANICAL CALIPER COMPLETE WITH PADS AND MOUNTING BOLTS IN DISPLAY CARTON
CMB141	COUPLING MOUNTING BOLTS, 4" X 1/2" - BULK
CMB151	COUPLING MOUNTING BOLTS, 1 1/2" X 1/2"
CMB152B	COUPLING MOUNTING BOLTS, 2 X 1 1/2" X 1/2" - SUITS 2 HOLE COUPLING - BLISTER
CMB153B	COUPLING MOUNTING BOLTS, 3 X 1 1/2" X 1/2" - SUITS 3 HOLE COUPLING - BLISTER
CMB44B	COUPLING MOUNTING BOLTS, 4" X 1/2" - BLISTER
CPL10	TRAILER COUPLING LOCK, BULK
CR2070	CLEAR SLIMLINE SELF ADHESIVE REFLECTOR - 20MM X 70MM, BULK
CR2285	CLEAR SELF ADHESIVE REFLECTOR - ADR APPROVED - 22MM X 85MM, BULK
CR2285B	2 X CLEAR SELF ADHESIVE REFLECTORS - ADR APPROVED - IN BLISTER PACK
CR4060	CLEAR SELF ADHESIVE REFLECTOR - 40MM X 60MM, BULK
CSC50	COUPLING SAFETY CATCH TO SUIT 50MM BALL COUPLINGS
CWC300D	COMPACT WHEEL CLAMP, YELLOW, WITH ARK LOGO, 2 KEYS AND CARRY BAG IN DISPLAY CARTON
DA10W	POWERPACK - 12V BATTERY BOX WITH BUILT IN 6-STAGE SMART CHARGER
DBK40CD	DISC BRAKE KIT TO SUIT COMMODORE W/ HOLDEN BEARINGS
DBK40FH	DISC BRAKE KIT TO SUIT FORD W/ HOLDEN BEARINGS
DBK40FHG	DISC BRAKE KIT TO SUIT FORD W/ HOLDEN BEARINGS - GALVANISED
DBK40HQ	DISC BRAKE KIT TO SUIT HQ HOLDEN W/ HOLDEN BEARINGS
DBK40HQQ	DISC BRAKE KIT TO SUIT HQ HOLDEN W/ HOLDEN BEARINGS - GALVANISED
DBK40HT	DISC BRAKE KIT TO SUIT HT HOLDEN W/ HOLDEN BEARINGS
DBK40HTG	DISC BRAKE KIT TO SUIT HT HOLDEN W/ HOLDEN BEARINGS - GALVANISED
DBK45LF	DISC BRAKE KIT TO SUIT 5 STUD LANDCRUISER W/ FORD BEARINGS
DBK45FD	DISC BRAKE KIT TO SUIT FORD W/ FORD BEARINGS
DBK45FDG	DISC BRAKE KIT TO SUIT FORD W/FORD BEARINGS - GALVANISED
DBK45LF	DISC BRAKE KIT TO SUIT 6 STUD LANDCRUISER W/ FORD BEARINGS
DBK45LFG	DISC BRAKE KIT TO SUIT 6 STUD LANDCRUISER W/ FORD BEARINGS - GALVANISED
DC45	ZINC PLATED DUST COVER - BULK PACK
DC45B	2 X ZINC PLATED DUST COVER IN BLISTER PACK
DH12CD	1/2" DISC HUB - SUITS COMMODORE - HOLDEN BEARINGS, DUST CAPS, SEAL AND NUTS IN CARTON

ARK TRAILER ACCESSORIES



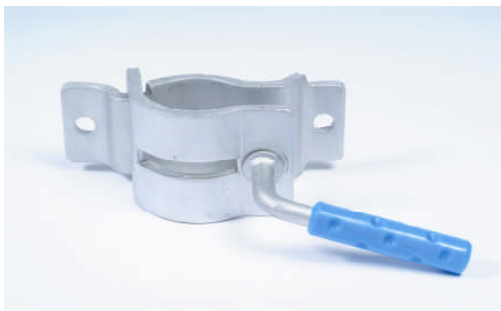
CODE NO.	DESCRIPTION
DH12CDF	1/2" DISC HUB - SUITS COMMODORE - FORD BEARINGS, DUST CAPS, SEAL AND NUTS IN CARTON
DH12CDFG	1/2" DISC HUB - GALVANISED - SUITS COMMODORE - FORD BEARINGS, DUST CAPS, SEAL AND NUTS IN CARTON
DH12FD	1/2" DISC HUB - SUITS FORD - FORD BEARINGS, DUST CAPS, SEAL AND NUTS IN CARTON
DH12FDG	1/2" DISC HUB - GALVANISED - SUITS FORD - FORD BEARINGS, DUST CAPS, MARINE SEAL AND NUTS
DH12FH	1/2" DISC HUB TO SUIT FORD - HOLDEN BEARINGS, DUST CAP, SEAL AND NUTS IN CARTON
DH12FHD	1/2" DISC HUB TO SUIT FORD - HOLDEN BEARINGS, DUST CAP, SEAL AND NUTS IN DISPLAY CARTON
DH12FHG	1/2" DISC HUB - GALVANISED - SUIT FORD - HOLDEN BEARINGS, DUST CAP, SEAL AND NUTS
DH12HQ	1/2" DISC HUB TO SUIT HQ HOLDEN - WITH HOLDEN BEARINGS, DUST CAP, SEAL & NUTS IN CARTON
DH12HQD	1/2" DISC HUB TO SUIT HQ HOLDEN - WITH HOLDEN BEARINGS, DUST CAP, SEAL & NUTS IN DISPLAY CARTON
DH12HQF	1/2" DISC HUB TO SUIT HQ HOLDEN - WITH FORD BEARINGS, DUST CAP, SEAL & NUTS IN CARTON
DH12HQFG	1/2" DISC HUB - GALVANISED - SUIT HQ HOLDEN - WITH FORD BEARINGS, DUST CAP, SEAL & NUTS IN CARTON
DH12HQG	1/2" DISC HUB - GALVANISED - SUIT HQ HOLDEN - HOLDEN BEARINGS, DUST CAP, SEAL & NUTS IN CARTON
DH12HT	1/2" DISC HUB TO SUIT HT HOLDEN - HOLDEN BEARINGS, DUST CAP, SEAL & NUTS
DH12HTD	1/2" DISC HUB TO SUIT HT HOLDEN - HOLDEN BEARINGS, DUST CAP, SEAL & NUTS IN DISPLAY CARTON
DH12HTF	1/2" DISC HUB - SUITS HT HOLDEN WITH FORD BEARINGS, DUST CAPS, SEAL AND NUTS IN CARTON
DH12HTFD	1/2" DISC HUB - SUITS HT HOLDEN WITH FORD BEARINGS, DUST CAPS, SEAL AND NUTS IN DISPLAY CARTON
DH12HTFG	1/2" DISC HUB - GALVANISED - SUITS HT HOLDEN - FORD BEARINGS DUST CAPS, MARINE SEAL AND NUTS
DH12HTFGD	1/2" DISC HUB - GALV - SUITS HT HOLDEN - FORD BEARINGS DUST CAPS, MARINE SEAL AND NUTS IN DISP. CARTON
DH12HTG	1/2" DISC HUB - GALVANISED - SUIT HT HOLDEN - HOLDEN BEARINGS, DUST CAP, SEAL & NUTS
DH585LF	5/8" DISC HUB - SUITS LANDCRUISER - FORD BEARINGS, DUST CAPS, SEAL AND NUTS W/ 5 STUDS IN CARTON
DH58LF	5/8" DISC HUB - SUITS LANDCRUISER - FORD BEARINGS, DUST CAPS, SEAL AND NUTS IN CARTON

ARK TRAILER ACCESSORIES



CODE NO.	DESCRIPTION
DH58LFG	5/8" DISC HUB - GALV - SUITS LANDCRUISER - FORD BEARINGS, DUST CAPS, SEAL AND NUTS IN CARTON
DP1028	DISC PADS (1 PAIR) TO SUIT CALIPER
DP1028B	DISC PADS (1 PAIR) - TO SUIT CALIPER IN BLISTER
DSG06B	DEE SHACKLE - 6MM GALVANISED - IN BLISTER
DSG08	DEE SHACKLE - 8MM GALVANISED - BULK
DSG08B	DEE SHACKLE - 8MM GALVANISED - IN BLISTER
DSG10	DEE SHACKLE - 10MM GALVANISED - BULK
DSG10B	DEE SHACKLE - 10MM GALVANISED - IN BLISTER
DSG12	DEE SHACKLE - 12MM GALVANISED - BULK
DSG12B	DEE SHACKLE - 12MM GALVANISED - IN BLISTER
DSG16B	DEE SHACKLE - 16MM GALVANISED - IN BLISTER
DSS06B	DEE SHACKLE - 6MM STAINLESS STEEL - IN BLISTER
DSS08B	DEE SHACKLE - 8MM STAINLESS STEEL - IN BLISTER
DSS10B	DEE SHACKLE - 10MM STAINLESS STEEL - IN BLISTER
DSS12B	DEE SHACKLE - 12MM STAINLESS STEEL - IN BLISTER
EBC24BF	BRAKE-FORCE, LED BRAKE CONTROL
EBC24-I	IMPULSE DIGITAL BRAKE CONTROL
EBK24	BREAK-AWAY KIT WITH LED'S & CHARGER
EBK24S	BREAK-AWAY KIT WITH LED'S & CHARGER, SIDEMOUNT
EBK40FH	10" ELECTRIC DRUM BRAKE KIT TO SUIT FORD W/ HOLDEN BEARINGS
EBK40HQ	10" ELECTRIC DRUM BRAKE KIT TO SUIT HQ HOLDEN W/ HOLDEN BEARINGS
EBK40HT	10" ELECTRIC DRUM BRAKE KIT TO SUIT HT HOLDEN W/ HOLDEN BEARINGS
EBK45FD	10" ELECTRIC DRUM BRAKE KIT TO SUIT FORD W/ FORD BEARINGS
EBK45LF	10" ELECTRIC DRUM BRAKE KIT TO SUIT 6 STUD LANDCRUISER W/ FORD BEARINGS
EBP10L	10" ELECTRICAL BACKING PLATE - LEFT HAND SIDE
EBP10R	10" ELECTRICAL BACKING PLATE - RIGHT HAND SIDE
EBP12L	12" ELECTRICAL BACKING PLATE - LEFT HAND SIDE
EBP12R	12" ELECTRICAL BACKING PLATE - RIGHT HAND SIDE
EBPMAG	MAGNET TO SUIT ELECTRICAL BACKING PLATE
EBS24	ELECTRIC BREAK-AWAY SWITCH
EC35Z	3500KG ZINC PLATED ELECTRIC COUPLING WITH ADJUSTABLE SCREW
EG10	EZIGUIDE WITH 10MM SPRING - COMPLETE
EG10-SPR	SPRINGS TO SUIT EG10, SET OF 2, SPARE PARTS
EG11	EZIGUIDE WITH 11MM SPRING - COMPLETE
EG11-SPR	SPRINGS TO SUIT EG11, SET OF 2, SPARE PARTS
EG13	EZIGUIDE WITH 13MM SPRING - COMPLETE
EG13-SPR	SPRINGS TO SUIT EG13, SET OF 2, SPARE PARTS
EG8	EZIGUIDE WITH 8MM SPIRNG - COMPLETE
EG8-SPR	SPRINGS TO SUIT EG8, SET OF 2, SPARE PARTS
EG-TR45	TOP ROLLER 45MM - TO SUIT EZIGUIDE SERIES, SPARE PARTS
ET18	BLACK PVC ELECTRICAL INSULATING TAPE - 18MM X 20M, BULK

ARK TRAILER ACCESSORIES



CODE NO.	DESCRIPTION
FBL35	FORD TYPE BEARINGS - 1 3/8" CONE - BULK PACK
FBS35	FORD TYPE BEARINGS - 7/8" CONE - BULK PACK
FC125	7 CORE FLAT TRAILER CABLE X 1.25M LENGTH, BULK
FC7B	7 CORE FLAT TRAILER CABLE X 1.5M LENGTH IN BLISTER PACK
FCL2HD	FIXED CLAMP TO SUIT HEAVY DUTY JOCKEY WHEELS
FCL50	FIXED CLAMP TO SUIT JW6C, JW8C, JW10C, JS35C & RJW10C
FCL8	FIXED CLAMP WITH 8 HOLES, BULK
FD150	6" HUB - SUITS FORD - FORD BEARINGS, DUST CAPS AND NUTS IN CARTON
FD150G	6" HUB - GALVANISED - SUITS FORD - FORD BEARINGS, DUST CAPS, MARINE SEAL & NUTS IN CARTON
FH150	6" HUB - SUITS FORD - HOLDEN BEARINGS, DUST CAPS AND NUTS IN CARTON
FH150D	6" HUB - SUITS FORD - HOLDEN BEARINGS, DUST CAPS AND NUTS IN DISPLAY CARTON
FH150G	6" HUB - GALVANISED - SUITS FORD - HOLDEN BEARINGS, DUST CAPS, MARINE SEAL & NUTS
FH150GD	6" HUB - GALVANISED - SUITS FORD - HOLDEN BEARINGS, DUST CAPS, MARINE SEAL & NUTS IN DISPLAY CARTON
FKB7	7 PIN FLAT SOCKET CONNECTED TO 1.25M ROUND CABLE WITH 7 WIRE CLIPS IN BLISTER PACK
FKP7	7 PIN FLAT SOCKET CONNECTED TO 1.25M ROUND CABLE WITH 7 WIRE CLIPS IN POLY BAG
FKP716	7 PIN FLAT SOCKET CONNECTED TO 1.6M ROUND CABLE IN POLY BAG
FKP72	7 PIN FLAT SOCKET CONNECTED TO 2M ROUND CABLE WITH MOUNTING SCREWS
FP3950	FISH PLATE, PLAIN FINISH - BULK.
FP3950G	FISH PLATE, GALVANISED - BULK.
FP3950GB	FISH PLATE, GALVANISED FINISH - BLISTER PACK
FPB12	12 PIN FLAT PLASTIC TRAILER PLUG IN BLISTER PACK
FPB7	7 PIN FLAT PLASTIC TRAILER PLUG IN BLISTER PACK
FPP12	12 PIN FLAT PLASTIC TRAILER PLUG IN PLOY BAG
FPP7	7 PIN FLAT PLASTIC TRAILER PLUG IN POLY BAG
FS25LP	CONNECTS 7 PIN FLAT SOCKET ON CAR TO 5 PIN LARGE ROUND PLUG ON TRAILER IN BLISTER PACK
FS26P	CONNECTS 7 PIN FLAT SOCKET ON CAR TO 6 PIN SMALL ROUND PLUG ON TRAILER IN BLISTER PACK
FS27LP	CONNECTS 7 PIN FLAT SOCKET ON CAR TO 7 PIN LARGE ROUND PLUG ON TRAILER IN BLISTER PACK
FS27P	CONNECTS 7 PIN FLAT SOCKET ON CAR TO 7 PIN SMALL ROUND PLUG ON TRAILER IN BLISTER PACK
FSB12	12 PIN FLAT PLASTIC TRAILER SOCKET IN BLISTER PACK
FSB7	7 PIN FLAT PLASTIC TRAILER SOCKET IN BLISTER PACK
FSH45	FRONT SPRING HANGER BLACK
FSP12	12 PIN FLAT PLASTIC TRAILER SOCKET IN POLY BAG
FSP7	7 PIN FLAT PLASTIC TRAILER SOCKET IN POLY BAG

ARK TRAILER ACCESSORIES



CODE NO.	DESCRIPTION
GBH4G	ADJUSTABLE GAS BOTTLE HOLDER GALVANISED - 4.5KG'S
GBH9G	ADJUSTABLE GAS BOTTLE HOLDER GALVANISED - 9KG'S
GC15Z	GATE CATCHER, ZINC PLATED
GH150	6" HUB - SUITS HOLDEN GEMINI - HOLDEN BEARINGS, DUST CAPS, SEAL AND NUTS IN CARTON
HBFK34	HYDRAULIC BRAKE FITTING KIT FOR 3/4" MASTER CYLINDER
HBK40FH	9" HYDRAULIC DRUM BRAKE KIT TO SUIT FORD W/ HOLDEN BEARINGS
HBK40HQ	9" HYDRAULIC DRUM BRAKE KIT TO SUIT HQ HOLDEN W/ HOLDEN BEARINGS
HBK40HT	9" HYDRAULIC DRUM BRAKE KIT TO SUIT HT HOLDEN W/ HOLDEN BEARINGS
HBK45FD	9" HYDRAULIC DRUM BRAKE KIT TO SUIT FORD W/ FORD BEARINGS
HBK45LF	9" HYDRAULIC DRUM BRAKE KIT TO SUIT 6 STUD LANDCRUISER W/ FORD BEARINGS
HBL32	HOLDEN TYPE BEARINGS - 1 1/4" CONE - BULK PACK
HBP90L	9" HYDRAULIC BACKING PLATE - LEFT SIDE
HBP90R	9" HYDRAULIC BACKING PLATE - RIGHT SIDE
HBR50	HYDRAULIC BRACKET ASSEMBLY - SUITS 3/4" & 7/8" MASTER CYLINDER
HBR50G	GALVANISED HYDRAULIC BRACKET ASSEMBLY - SUITS 3/4" & 7/8" MASTER CYLINDER
HBR50Z	ZINC PLATED HYDRAULIC BRACKET ASSEMBLY - SUITS 3/4" & 7/8" MASTER CYLINDER
HBRM1	HYDRAULIC BRACKET ASSEMBLY - FITTED WITH 1" MASTER CYLINDER
HBRM34	HYDRAULIC BRACKET ASSEMBLY - FITTED WITH 3/4" MASTER CYLINDER
HBRM34Z	ZINC PLATED HYDRAULIC BRACKET ASSEMBLY - FITTED WITH 3/4" MASTER CYLINDER
HBRM78	HYDRAULIC BRACKET ASSEMBLY - FITTED WITH 7/8" MASTER CYLINDER
HBS32	HOLDEN TYPE BEARINGS - 3/4" CONE - BULK PACK
HC80	BLACK HITCH RECEIVER COVER IN POLY BAG
HCC80	HITCH RECEIVER COVER WITH CHROME LID IN POLY BAG
HCC80B	HITCH RECEIVER COVER WITH CHROME LID IN BLISTER PACK
HCL80	HITCH COLLAR PERSONALISED WITH LOGO
HCL80A	HITCH COLLAR WITH ARK LOGO
HD10X2FD	10" X 2 1/4" HUB DRUM - FORD WITH FORD BEARINGS, SEAL, NUTS & DUST COVER
HD10X2FH	10" X 2 1/4" HUB DRUM - FORD WITH HOLDEN BEARINGS, SEAL, NUTS & DUST COVER
HD10X2HQ	10" X 2 1/4" HUB DRUM - SUIT HQ HOLDEN - HOLDEN BEARINGS, SEAL, NUTS & DUST COVER
HD10X2HT	10" X 2 1/4" HUB DRUM - SUIT HT HOLDEN - HOLDEN BEARINGS, SEAL, NUTS & DUST COVER
HD10X2LF	10" X 2 1/4" HUB DRUM - LANDCRUISER WITH FORD BEARINGS, SEAL, NUTS & DUST COVER

ARK TRAILER ACCESSORIES



CODE NO.	DESCRIPTION
HD10X2LH	10" X 2 1/4" HUB DRUM - LANDCRUISER WITH HOLDEN BEARINGS, SEAL, NUTS & DUST COVER
HD9X134FD	9" X 1 3/4" HUB DRUM - SUIT FORD - FORD BEARINGS, SEAL, NUTS & DUST COVER
HD9X134FH	9" X 1 3/4" HUB DRUM - SUIT FORD - HOLDEN BEARINGS, SEAL, NUTS & DUST COVER
HD9X134HQ	9" X 1 3/4" HUB DRUM - SUIT HQ HOLDEN - HOLDEN BEARINGS, SEAL, NUTS & DUST COVER
HD9X134HT	9" X 1 3/4" HUB DRUM - SUIT HT HOLDEN - HOLDEN BEARINGS, SEAL, NUTS & DUST COVER
HD9X134LF	9" X 1 3/4" HUB DRUM - SUIT LANDCRUISER - FORD BEARINGS, SEAL, NUTS & DUST COVER
HD9X134LH	9" X 1 3/4" HUB DRUM - SUIT LANDCRUISER - HOLDEN BEARINGS, SEAL, NUTS & DUST COVER
HDBS10	HUB DRUM BRAKE SHOE FOR 10" BACKING PLATE - SET OF 2
HDBS9	HUB DRUM BRAKE SHOE FOR 9" BACKING PLATE - SET OF 2
HDL50B	HANDLE TO SUIT ALL 350KG JOCKEY WHEELS - BLISTER PACK
HDL57	HANDLE TO SUIT HEAVY DUTY JOCKEY WHEELS
HP80	CHROME FINISH HITCH PIN WITH 'R' CLIP TO SUIT HITCHES 65 - 80MM LONG PACKED IN POLY BAG
HP80B	CHROME FINISH HITCH PIN WITH 'R' CLIP TO SUIT HITCHES 65 - 80MM LONG PACKED IN BLISTER PACK
HQ150	6" HUB - SUITS HQ HOLDEN -HOLDEN BEARINGS, DUST CAPS, SEAL AND NUTS IN CARTON
HQ150D	6" HUB - SUITS HQ HOLDEN -HOLDEN BEARINGS, DUST CAPS, SEAL AND NUTS IN DISPLAY CARTON
HQ150G	6" HUB - GALVANISED - SUITS HQ HOLDEN - HOLDEN BEARINGS, DUST CAPS, MARINE SEAL AND NUTS IN CART.
HQ150GD	6" HUB - GALVANISED - SUITS HQ HOLDEN - HOLDEN BEARINGS, DUST CAPS, MARINE SEAL & NUTS, DISPL.CART.
HQF150	6" HUB - SUITS HQ HOLDEN - FORD BEARINGS, DUST CAPS, SEAL AND NUTS
HRS4D	HITCH RECEIVER BRACKET
HT140	5 1/2" HUB - SUITS HT HOLDEN - HOLDEN BEARING, DUST COVER, MARINE SEAL & NUTS
HT140G	5 1/2" HUB - GALVANISED - SUITS HT HOLDEN - HOLDEN BEARING, DUST COVER, MARINE SEAL & NUTS
HT140GD	5 1/2" HUB - GALV - SUITS HT HOLDEN - HOLDEN BEARING, DUST COVER, MARINE SEAL & NUTS IN DISPLAY CARTON
HT150	6" HUB - SUITS HT HOLDEN - HOLDEN BEARINGS, DUST CAPS, SEAL AND NUTS IN CARTON

ARK TRAILER ACCESSORIES



CODE NO.	DESCRIPTION
HT150D	6" HUB - SUITS HT HOLDEN - HOLDEN BEARINGS, DUST CAPS, SEAL AND NUTS IN DISPLAY CARTON
HT150G	6" HUB - GALVANISED - SUITS HT HOLDEN - HOLDEN BEARINGS, DUST CAPS, MARINE SEAL & NUTS IN CART.
HT150GD	6" HUB - GALVANISED - SUITS HT HOLDEN - HOLDEN BEARINGS, DUST CAPS, MARINE SEAL & NUTS IN DISP. CART.
HTF150	6" HUB - SUITS HT HOLDEN - FORD BEARINGS DUST CAPS, SEAL AND NUTS IN CARTON
HTF150G	6" HUB - GALVANISED - SUITS HT HOLDEN - FORD BEARINGS DUST CAPS, MARINE SEAL & NUTS IN CART.
IN10	10" INNER TUBE FOR PNEUMATIC WHEEL - BULK
IN10B	10" INNER TUBE FOR PNEUMATIC WHEEL - BLISTER
JCH1020D	JERRY CAN HOLDER IN DISPLAY BOX
JCH300Z	JERRY CAN HOLDER, ZINC PLATED, BULK
JS35SU	JOCKEY STAND WITH SWIVEL U-BOLT BRACKET - SIDE WINDER
JSN35	JOCKEY STAND - NO CLAMP
JSN35C	JOCKEY STAND WITH BOLT ON/WELD ON CLAMP
JSN35S	JOCKEY STAND WITH SWIVEL BRACKET
JSN35SU	JOCKEY STAND WITH SWIVEL U-BOLT BRACKET - TOP WINDER
JW10CHD	HEAVY DUTY JOCKEY WHEEL - 10" SOLID RUBBER WHEEL WITH BOLT ON/WELD ON CLAMP
JW10SHD	HEAVY DUTY JOCKEY WHEEL - 10" SOLID RUBBER WHEEL WITH SWIVEL BOLT ON/WELD ON BRACKET
JW10SUHD	HEAVY DUTY JOCKEY WHEEL - 10" SOLID RUBBER WHEEL WITH SWIVEL U-BOLT BRACKET
JW8CHD	HEAVY DUTY JOCKEY WHEEL - 8" STEEL RIMMED WHEEL WITH BOLT ON/WELD ON CLAMP
JW8SHD	HEAVY DUTY JOCKEY WHEEL - 8" STEEL RIMMED WHEEL WITH SWIVEL BOLT ON/WELD ON BRACKET
JW8SUHD	HEAVY DUTY JOCKEY WHEEL - 8" STEEL RIMMED WHEEL WITH SWIVEL U-BOLT BRACKET
JWBN6	6" RUBBER BOAT WHEEL & BRACKET
JWN10	JOCKEY WHEEL - 10" SOLID RUBBER WHEEL - NO CLAMP
JWN10C	JOCKEY WHEEL - 10" SOLID RUBBER WHEEL WITH BOLT ON/WELD ON CLAMP
JWN10CP	JOCKEY WHEEL - 10" PNEUMATIC WHEEL WITH BOLT ON / WELD ON CLAMP
JWN10P	JOCKEY WHEEL - 10" PNEUMATIC WHEEL - NO CLAMP
JWN10S	JOCKEY WHEEL - 10" SOLID RUBBER WHEEL WITH SWIVEL BOLT ON/WELD ON BRACKET
JWN10SP	JOCKEY WHEEL - 10" PNEUMATIC WHEEL WITH SWIVEL BOLT ON / WELD ON CLAMP

ARK TRAILER ACCESSORIES



CODE NO.	DESCRIPTION
JWN10SU	JOCKEY WHEEL - 10" SOLID RUBBER WHEEL WITH SWIVEL U-BOLT BRACKET
JWN10SUP	JOCKEY WHEEL - 10" PNEUMATIC WHEEL WITH SWIVEL U-BOLT BRACKET
JWN6	JOCKEY WHEEL - 6" RUBBER WHEEL - NO CLAMP
JWN6C	JOCKEY WHEEL - 6" RUBBER WHEEL WITH BOLT ON/WELD ON CLAMP
JWN6S	JOCKEY WHEEL - 6" RUBBER WHEEL WITH SWIVEL BOLT ON/WELD ON BRACKET
JWN6SU	JOCKEY WHEEL - 6" RUBBER WHEEL WITH SWIVEL U-BOLT BRACKET
JWN8	JOCKEY WHEEL - 8" STEEL RIMMED WHEEL - NO CLAMP
JWN8C	JOCKEY WHEEL - 8" STEEL RIMMED WHEEL WITH BOLT ON/WELD ON CLAMP
JWN8S	JOCKEY WHEEL - 8" STEEL RIMMED WHEEL WITH SWIVEL BOLT ON/WELD ON BRACKET
JWN8SU	JOCKEY WHEEL - 8" STEEL RIMMED WHEEL WITH SWIVEL U-BOLT BRACKET
LB90	ANGLE MOUNTING BRACKET SUITABLE FOR LARGE ROUND SOCKET IN BOX
LB90B	ANGLE MOUNTING BRACKET SUITABLE FOR LARGE ROUND SOCKET IN BLISTER PACK
LC360	FLAT MOUNTING BRACKET SUITABLE FOR LARGE ROUND SOCKET IN BOX
LC360B	FLAT MOUNTING BRACKET SUITABLE FOR LARGE ROUND SOCKET IN BLISTER PACK
LD10L	LED SQUARE COMBINATION LAMP 12V LEFT SIDE
LD10LB	LED SQUARE COMBINATION LAMP 12V LEFT SIDE IN BLISTER
LD10ML	LED SQUARE COMBINATION LAMP 12V/24V LEFT SIDE
LD10MR	LED SQUARE COMBINATION LAMP 12V/24V RIGHT SIDE WITH BUILT IN NUMBER PLATE LIGHT
LD10R	LED SQUARE COMBINATION LAMP 12V RIGHT SIDE WITH BUILT IN NUMBER PLATE LIGHT
LD10RB	LED SQUARE COMBINATION LAMP 12V RIGHT SIDE WITH BUILT IN NUMBER PLATE LIGHT IN BLISTER
LD10SB	LED SQUARE COMBINATION LAMP SET 12V, LEFT & RIGHT SIDE IN BLISTER WITH TRY ME BUTTON
LD10SSB	LED SUBMERSIBLE SQUARE COMBINATION LAMP SET 12V, LEFT & RIGHT SIDE IN BLISTER WITH TRY ME BUTTON
LD158	LED SUBMERSIBLE RECTANGULAR LAMP SET OF 2 (LEFT & RIGHT SIDES), 12V, RIGHT SIDE WITH BUILT IN NUMBER PLATE LIGHT, PRE WIRED TO 8M OF CABLE
LD158M	LED SUBMERSIBLE RECTANGULAR LAMP SET OF 2 (LEFT & RIGHT SIDES), 12V/24V, RIGHT SIDE WITH BUILT IN NUMBER PLATE LIGHT, PRE WIRED TO 8M OF CABLE

ARK TRAILER ACCESSORIES



CODE NO.	DESCRIPTION
LD15L	LED RECTANGULAR LAMP 12V LEFT SIDE
LD15LB	LED RECTANGULAR LAMP 12V LEFT SIDE IN BLISTER
LD15ML	LED RECTANGULAR LAMP 12V/24V LEFT SIDE
LD15MR	LED RECTANGULAR LAMP 12V/24V RIGHT SIDE WITH BUILT IN NUMBER PLATE LIGHT
LD15R	LED RECTANGULAR LAMP 12V RIGHT SIDE WITH BUILT IN NUMBER PLATE LIGHT
LD15RB	LED RECTANGULAR LAMP 12V RIGHT SIDE WITH BUILT IN NUMBER PLATE LIGHT IN BLISTER
LD15SB	LED RECTANGULAR LAMP SET 12V, LEFT & RIGHT SIDES IN BLISTER WITH TRY ME BUTTON
LD15SSB	LED SUBMERSIBLE RECTANGULAR LAMP SET 12V, LEFT & RIGHT SIDES IN BLISTER WITH TRY ME BUTTON
LDA70	LED AMBER MARKER 12V/24V
LDA70B	LED AMBER MARKER 12V/24V SET OF 2 IN BLISTER WITH TRY ME BUTTON
LDM70	LED RED/AMBER MARKER 12V/24V
LDM70B	LED RED/AMBER MARKER 12V/24V SET OF 2 IN BLISTER WITH TRY ME BUTTON
LDN90	LED LICENSE PLATE LAMP 12V/24V
LDN90B	LED LICENSE PLATE LAMP 12V/24V IN BLISTER
LDR70	LED RED MARKER 12V/24V
LDR70B	LED RED MARKER 12V/24V SET OF 2 IN BLISTER WITH TRY ME BUTTON
LDW70	LED CLEAR MARKER LAMP 12V/24V
LDW70B	LED CLEAR MARKER LAMP 12V/24V SET OF 2 IN BLISTER WITH TRY ME BUTTON
LF190	7 1/2" HUB SUITS LANDCRUISER - FORD BEARINGS, DUST COVER, SEAL & NUTS IN CARTON
LF1905	7 1/2" 5 STUD HUB SUITS LANDCRUISER - FORD BEARINGS, DUST COVER, SEAL & NUTS IN DISPLAY CARTON
LF190D	7 1/2" HUB SUITS LANDCRUISER - FORD BEARINGS, DUST COVER, SEAL & NUTS IN DISPLAY CARTON
LF190G	7 1/2" HUB - GALVANISED - SUITS LANDCRUISER - FORD BEARINGS, DUST COVER, SEAL & NUTS IN CARTON
LH190	7 1/2" HUB SUITS LANDCRUISER - HOLDEN BEARINGS, DUST COVER, SEAL & NUTS IN CARTON
LH190D	7 1/2" HUB SUITS LANDCRUISER - HOLDEN BEARINGS, DUST COVER, SEAL & NUTS IN DISPLAY CARTON
LMP5	5 PIN LARGE ROUND METAL TRAILER PLUG IN POLY BAG
LMP5B	5 PIN LARGE ROUND METAL TRAILER PLUG IN BLISTER PACK
LMP7	7 PIN LARGE ROUND METAL TRAILER PLUG IN POLY BAG
LMP7B	7 PIN LARGE ROUND METAL TRAILER PLUG IN BLISTER PACK
LMS5	5 PIN LARGE ROUND METAL TRAILER SOCKET IN POLY BAG
LMS5B	5 PIN LARGE ROUND METAL TRAILER SOCKET IN BLISTER PACK
LMS7	7 PIN LARGE ROUND METAL TRAILER SOCKET IN POLY BAG

ARK TRAILER ACCESSORIES



CODE NO.	DESCRIPTION
LMS7B	7 PIN LARGE ROUND METAL TRAILER SOCKET IN BLISTER PACK
LPP5	5 PIN LARGE ROUND PLASTIC TRAILER PLUG IN POLY BAG
LPP5B	5 PIN LARGE ROUND PLASTIC TRAILER PLUG IN BLISTER PACK
LPP7	7 PIN LARGE ROUND PLASTIC TRAILER PLUG IN POLY BAG
LPP7B	7 PIN LARGE ROUND PLASTIC TRAILER PLUG IN BLISTER PACK
LPS5	5 PIN LARGE ROUND PLASTIC TRAILER SOCKET IN POLY BAG
LPS5B	5 PIN LARGE ROUND PLASTIC TRAILER SOCKET IN BLISTER PACK
LPS7	7 PIN LARGE ROUND PLASTIC TRAILER SOCKET IN POLY BAG
LPS7B	7 PIN LARGE ROUND PLASTIC TRAILER SOCKET IN BLISTER PACK
LSL7	7 PIN LARGE ROUND SOCKET CONNECTED TO 1.25M ROUND CABLE WITH 7 WIRE CLIPS IN POLY BAG
M90	ANGLE MOUNTING BRACKET SUITABLE FOR SMALL ROUND METAL SOCKET IN BOX
MB90	ANGLE MOUNTING BRACKET SUITABLE FOR SMALL ROUND METAL SOCKET IN BLISTER PACK
MBC34	RED PVC METAL BEARING BUDDY DUST COVER - SET OF 2 - IN POLY BAG
MBC34B	BLUE PVC METAL BEARING BUDDY DUST COVERS - SET OF 2 - BLISTER PACK
MBCB34	BLUE PVC METAL BEARING BUDDY DUST COVER - SET OF 2 - IN POLY BAG
MBK32	MARINE BEARING KIT - HOLDEN - IN BLISTER PACK
MBK35	MARINE BEARING KIT - FORD - IN BLISTER PACK
MBK40FH	9" MECHANICAL DRUM BRAKE KIT TO SUIT FORD W/ HOLDEN BEARINGS
MBK40HQ	9" MECHANICAL DRUM BRAKE KIT TO SUIT HQ HOLDEN W/ HOLDEN BEARINGS
MBK40HT	9" MECHANICAL DRUM BRAKE KIT TO SUIT HT HOLDEN W/ HOLDEN BEARINGS
MBK45FD	9" MECHANICAL DRUM BRAKE KIT TO SUIT FORD W/ FORD BEARINGS
MBK45LF	9" MECHANICAL DRUM BRAKE KIT TO SUIT 6 STUD LANDCRUISER W/ FORD BEARINGS
MBP34	CHROME FINISH METAL BEARING PROTECTOR INCLUDES PVC DUST COVERS- SET OF 2 - IN POLY BAG
MBP34B	CHROME FINISH METAL BEARING BUDDY INCLUDES PVC DUST COVERS - SET OF 2 - BLISTER PACK
MBP50	MECHANICAL ADAPTOR PLATE - SUITS OVER-RIDE COUPLING
MBP50G	GALVANISED MECHANICAL ADAPTOR PLATE - SUITS OVER-RIDE COUPLING
MBP50Z	ZINC PLATED MECHANICAL ADAPTOR PLATE - SUITS OVER-RIDE COUPLING
MBP90L	9" MECHANICAL BACKING PLATE - LEFT HAND SIDE
MBP90R	9" MECHANICAL BACKING PLATE - RIGHT HAND SIDE
MCC34	3/4" MASTER CYLINDER PLASTIC CAP - BULK
MCC34B	3/4" MASTER CYLINDER PLASTIC CAP - BLISTER
MH140	5 1/2" HUB - SUITS MINI - HOLDEN BEARINGS, DUST COVER SEAL & NUTS

ARK TRAILER ACCESSORIES



CODE NO.	DESCRIPTION
MH140G	5 1/2" HUB - GALVANISED - SUITS MINI - HOLDEN BEARINGS, DUST COVER SEAL & NUTS
MLK984	MAGNETIC TOW LAMP KIT - 2 COMB. LAMPS CONNECT. W/ 8M CABLE & 7 PIN ROUND PLUG IN CARRY CASE
MP39	MOUNTING PLATE FOR 39MM ROUND AXLE SUITS MECHANICAL AND HYDRAULIC CALIPER - BULK
MP39G	GALVANISED MOUNTING PLATE FOR 39MM ROUND AXLE SUITS MECHANICAL AND HYDRAULIC CALIPER - BULK
MP39GB	GALVANISED MOUNTING PLATE FOR 39MM ROUND AXLE SUITS MECHANICAL AND HYDRAULIC CALIPER - BLISTER
MP40	MOUNTING PLATE FOR 40MM SQUARE AXLE SUITS MECHANICAL AND HYDRAULIC CALIPER - BULK
MP40G	GALVANISED MOUNTING PLATE FOR 40MM SQUARE AXLE SUITS MECHANICAL AND HYDRAULIC CALIPER - BULK
MP40GB	GALVANISED MOUNTING PLATE FOR 40MM SQUARE AXLE SUITS MECHANICAL AND HYDRAULIC CALIPER - BLISTER
MP45	MOUNTING PLATE FOR 45MM SQUARE AXLE SUITS MECHANICAL AND HYDRAULIC CALIPER - BULK
MP45G	GALVANISED MOUNTING PLATE FOR 45MM SQUARE AXLE SUITS MECHANICAL AND HYDRAULIC CALIPER - BULK
MP45GB	GALVANISED MOUNTING PLATE FOR 45MM SQUARE AXLE SUITS MECHANICAL AND HYDRAULIC CALIPER - BLISTER
MP60	6 PIN SMALL ROUND METAL TRAILER PLUG IN POLY BAG
MP60B	6 PIN SMALL ROUND METAL TRAILER PLUG IN BLISTER PACK
MP70	7 PIN SMALL ROUND METAL TRAILER PLUG IN POLY BAG
MP70B	7 PIN SMALL ROUND METAL TRAILER PLUG IN BLISTER PACK
MPL45	MOUNTING PLATE CENTRE TYPE FOR 45MM SQUARE AXLE
MPO39	MOUNTING PLATE OFF CENTRE FOR 39MM ROUND AXLE
MPO40	MOUNTING PLATE OFF CENTRE FOR 40MM SQUARE AXLE
MPO45	MOUNTING PLATE OFF CENTRE FOR 45MM SQUARE AXLE
MPR40R	ROUND MOUNTING PLATE TO SUIT 40MM ROUND AXLE
MPR40S	ROUND MOUNTING PLATE TO SUIT 40MM SQUARE AXLE
MPR45	MOUNTING PLATE TO SUIT 45MM ROUND AXLE
MPR45R	ROUND MOUNTING PLATE TO SUIT 45MM ROUND AXLE
MPR45S	ROUND MOUNTING PLATE TO SUIT 45MM SQUARE AXLE
MPR50S	ROUND MOUNTING PLATE TO SUIT 50MM SQUARE AXLE
MPS40R	SQUARE MOUNTING PLATE TO SUIT 40MM ROUND AXLE
MPS40S	SQUARE MOUNTING PLATE TO SUIT 40MM SQUARE AXLE
MPS45R	SQUARE MOUNTING PLATE TO SUIT 45MM ROUND AXLE
MPS45S	SQUARE MOUNTING PLATE TO SUIT 45MM SQUARE AXLE
MS32	HOLDEN TYPE WATERPROOF BEARING SEAL - BULK PACK
MS35	FORD TYPE WATERPROOF BEARING SEAL - BULK PACK

ARK TRAILER ACCESSORIES



CODE NO.	DESCRIPTION
MS60	6 PIN SMALL ROUND METAL TRAILER SOCKET IN POLY BAG
MS60B	6 PIN SMALL ROUND METAL TRAILER SOCKET IN BLISTER PACK
MS70	7 PIN SMALL ROUND METAL TRAILER SOCKET IN POLY BAG
MS70B	7 PIN SMALL ROUND METAL TRAILER SOCKET IN BLISTER PACK
MSK1	1" MASTER CYLINDER
MSK34	3/4" MASTER CYLINDER
MSK34B	3/4" MASTER CYLINDER - BLISTER
MSK78	7/8" MASTER CYLINDER
NPL75	NUMBER PLATE LAMP - ADR APPROVED - BULB INCLUDED IN POLY BAG
NPL75B	NUMBER PLATE LAMP - ADR APPROVED - BULB INCLUDED - IN BLISTER PACK
NW6	6" NYLON WHEEL TO SUIT JW6C & JW6S, BULK
NW6B	6" NYLON WHEEL TO SUIT JW6C & JW6S - IN BLISTER PACK
OMF110B	OUTBOARD MOTOR FLUSHER - OVAL
OMF125B	OUTBOARD MOTOR FLUSHER - RECTANGULAR
OMF95B	OUTBOARD MOTOR FLUSHER - ROUND
OML170B	OUTBOARD MOTOR LOCK, STAINLESS STEEL INCLUDES TWO KEYS, SUITS SMALL TO MEDIUM OUTBOARDS
OML225B	OUTBOARD MOTOR LOCK, STAINLESS STEEL INCLUDES TWO KEYS, SUITS MEDIUM TO LARGE OUTBOARDS
ORC50	2000KG MECHANICAL OVER-RIDE COUPLING
ORC50G	2000KG GALVANISED MECHANICAL OVER-RIDE COUPLING
ORC50Z	2000KG ZINC PLATED MECHANICAL OVER-RIDE COUPLING
PB60	6 PIN SMALL ROUND PLASTIC TRAILER PLUG IN BLISTER PACK
PB70	7 PIN SMALL ROUND PLASTIC TRAILER PLUG IN BLISTER PACK
PB700	3000KG OVER-RIDE POLYBLOCK COUPLING ONLY WITH BRAKE FACILITY
PB700COM	3000KG OVER-RIDE POLYBLOCK COUPLING WITH ADAPTOR AND BRAKE FACILITY
PB701	POLYBLOCK TOWBAR ADAPTOR ONLY
PB703	20MM LOCKING PIN
PB704	LINCH PIN
PB750	3000KG SWIVEL POLYBLOCK COUPLING ONLY WITHOUT BRAKE FACILITY
PB750COM	3000KG SWIVEL POLYBLOCK COUPLING WITH ADAPTOR AND NO BRAKE FACILITY
PBB32	POWER BATTERY BOX - WITH STRAP IN DISPLAY BOX
PBC50B	CLIP-ON BLACK TOWBALL COVER IN BLISTER PACK
PBC50D	CLIP-ON BLACK TOWBALL COVER IN DISPLAY CARTON OF 12
PBP35	POLYCARBONATE WHEEL BEARING BUDDY - SET OF 2 IN POLY BAG
PBP35B	POLYCARBONATE WHEEL BEARING BUDDY - SET OF 2 - IN BLISTER PACK
PC400B	OUTBOARD MOTOR PROPELLA COVER, SUITS ALL MODELS, BRIGHT ORANGE
PCC50B	CLIP-ON CHROME TOWBALL COVER IN BLISTER PACK
PCC50D	CLIP-ON CHROME TOWBALL COVER IN DISPLAY CARTON OF 12
PCCBD50B	CHROME COMBINED TOWBALL & GOOSENECK COVER IN BLISTER PACK

ARK TRAILER ACCESSORIES



CODE NO.	DESCRIPTION
PCCBS50B	CHROME COMBINED TOWBALL & GOOSENECK COVER WITH BLACK RUBBER SHIN PROTECTOR IN BLISTER PACK
PHB7	FLAT PLUG HOLDER IN BLISTER PACK
PHP7	FLAT PLUG HOLDER IN POLY BAG
PL80	HITCH PIN LOCK, SLIM LINE - SUITS HITCHES 65 - 80MM - CHROME FINISH - PACKED IN POLY BAG
PL80B	HITCH PIN LOCK, SLIM LINE - SUITS HITCHES 65 - 80MM - CHROME FINISH PACKED IN BLISTER PACK
PLS80	HITCH PIN LOCK, WITH SQUARE LOCK - SUITS HITCHES 65 - 80MM - PACKED IN POLY BAG
PLS80B	HITCH PIN WITH SQUARE LOCK - SUITS HITCHES 65 - 80MM - PACKED IN BLISTER PACK
PP60	6 PIN SMALL ROUND PLASTIC TRAILER PLUG IN POLY BAG
PP70	7 PIN SMALL ROUND PLASTIC TRAILER PLUG IN POLY BAG
PVC50D	BLACK PVC TOWBALL COVER IN DISPLAY CARTON OF 12
PW10	10" PNEUMATIC WHEEL
RAR2285B	2 X RED & 2 X AMBER SELF ADHESIVE REFLECTORS - ADR APPROVED - IN BLISTER PACK
RC75B	R' CLIP TO SUIT HITCH PIN AND PIN LOCKS - SET OF 2 - IN BLISTER PACK
RH12	REGISTRATION LABEL HOLDER, BULK
RJW1C	EZIMOVE RATCHET JOCKEY WHEEL 10" SOLID RUBBER WHEEL WITH CLAMP IN DISPLAY CARTON
RJW1SU	EZIMOVE RATCHET JOCKEY WHEEL 10" SOLID RUBBER WHEEL WITH SWIVEL U-BOLT BRACKET IN DISPLAY CARTON
RJW2C	EZIMOVE RATCHET JOCKEY WHEEL 10" DUAL SOLID RUBBER WHEELS WITH CLAMP IN DISPLAY CARTON
RL50	OVER-RIDE COUPLING REVERSE LEVER, INCLUDES SPRING & PIN
RR2070	RED SLIMLINE SELF ADHESIVE REFLECTOR - 20MM X 70MM, BULK
RR2285	RED SELF ADHESIVE REFLECTOR - ADR APPROVED - 22MM X 85MM, BULK
RR2285B	2 X RED SELF ADHESIVE REFLECTORS - ADR APPROVED - IN BLISTER PACK
RR4060	RED SELF ADHESIVE REFLECTOR - ADR APPROVED - 40MM X 60MM, BULK
RSH45	REAR SPRING HANGER, BLACK
SAX3910	STUB AXLE 39MM ROUND X 10" (25.4CM), COMPLETE WITH NUT,SPLIT PIN AND WASHER
SAX3912	STUB AXLE 39MM ROUND X 12" (30.48CM), COMPLETE WITH NUT,SPLIT PIN AND WASHER
SAX398	STUB AXLE 39MM ROUND X 8" (20.32CM), COMPLETE WITH NUT,SPLIT PIN AND WASHER
SAX399	STUB AXLE 39MM ROUND X 9" (22.85CM), COMPLETE WITH NUT,SPLIT PIN AND WASHER
SAX4010	STUB AXLE 40MM SQUARE X 10" (25.4CM), COMPLETE WITH NUT,SPLIT PIN AND WASHER
SAX4012	STUB AXLE 40MM SQUARE X 12" (30.48CM), COMPLETE WITH NUT,SPLIT PIN AND WASHER
SAX409	STUB AXLE 40MM SQUARE X 9" (22.8CM), COMPLETE WITH NUT,SPLIT PIN AND WASHER

ARK TRAILER ACCESSORIES



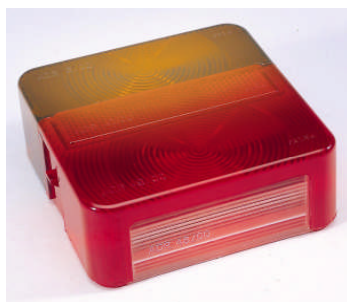
CODE NO.	DESCRIPTION
SAX4510	STUB AXLE 45MM SQUARE X 10" (25.4CM), COMPLETE WITH NUT,SPLIT PIN AND WASHER
SAX4512	STUB AXLE 45MM SQUARE X 12" (30.48CM), COMPLETE WITH NUT,SPLIT PIN AND WASHER
SAX459	STUB AXLE 45MM SQUARE X 9" (22.8CM), COMPLETE WITH NUT,SPLIT PIN AND WASHER
SB12	NYLON SHACKLE BUSH 1/2" X 7/8"
SB12B	NYLON SHACKLE BUSH 1/2" X 7/8", BLISTER
SB58	ROCKER BUSH 5/8" X 7/8" X 45MM
SB58B	ROCKER BUSH 5/8" X 7/8" X 45MM, BLISTER
SB60	6 PIN SMALL ROUND PLASTIC TRAILER SOCKET IN BLISTER PACK
SB70	7 PIN SMALL ROUND PLASTIC TRAILER SOCKET IN BLISTER PACK
SB8D	SNATCH BLOCK
SB916	ROCKER BUSH 9 1/6" X 7/8" X 45MM
SB916B	ROCKER BUSH 9 1/6" X 7/8" X 45MM, BLISTER
SBP34	STAINLESS STEEL METAL BEARING PROTECTOR INCLUDES BLUE PVC DUST COVERS - SET OF 2 - IN POLY BAG
SBP34B	STAINLESS STEEL METAL BEARING PROTECTOR INCLUDES BLUE PVC DUST COVERS - SET OF 2 - BLISTER PACK
SCL2	SWIVEL CLAMP WITH 2 HOLES
SCL8	SWIVEL CLAMP WITH 8 HOLES
SDM16	SELF DRILLING SCREW FOR METAL - 10-16X16
SDM25	SELF DRILLING SCREW FOR METAL - 10-16X25
SDP25	SELF DRILLING SCREW FOR PLASTIC - 10-12X25
SEE516	5 LEAF EYE TO EYE SPRING
SEE616	6 LEAF EYE TO EYE SPRING
SHK45GB	FRONT AND REAR SPRING HANGER, 1/2" X 3 1/2" BOLT WITH NYLOC NUT, GALVANISED FINISH - BLISTER
SKB60	6 PIN SMALL ROUND SOCKET CONNECTED TO 1.25M ROUND CABLE WITH 7 WIRE CLIPS IN BLISTER PACK
SKB70	7 PIN SMALL ROUND SOCKET CONNECTED TO 1.25M ROUND CABLE WITH 7 WIRE CLIPS IN BLISTER PACK
SL60	6 PIN SMALL ROUND SOCKET CONNECTED TO 1.25M ROUND CABLE WITH 7 WIRE CLIPS IN POLY BAG
SL70	7 PIN SMALL ROUND SOCKET CONNECTED TO 1.25M ROUND CABLE WITH 7 WIRE CLIPS IN POLY BAG
SL702	7 PIN SMALL ROUND SOCKET CONNECTED TO 2M ROUND CABLE WITH 7 WIRE CLIPS IN POLY BAG
SL702K	7 PIN SMALL ROUND SOCKET CONNECTED TO 2M ROUND CABLE WITH 7 W/CLIPS, 2 SDM16 & C90 IN BAG
SL70K	7 PIN SMALL ROUND SOCK. CONN. TO 1.25M ROUND CABLE WITH 7 W/CLIPS, 2 SDM16 & C90 IN BAG

ARK TRAILER ACCESSORIES



CODE NO.	DESCRIPTION
SN12	1/2" WHEEL NUT TO SUIT ST12
SN716	7/16" WHEEL NUT TO SUIT ST716
SP45	SPRING PAD, BLACK - BULK
SP45G	GALVANISED SPRING PAD - BULK
SP45GB	SPRING PAD, GALVANISED SET OF 2 - BLISTER
SP58	SHACKLE PIN 5/8" BLACK, WITH NYLOC NUT BLACK
SP58B	SHACKLE PIN 5/8" BLACK, WITH NYLOC NUT BLACK, BLISTER
SP58G	SHACKLE PIN 5/8" GREASEABLE WITH NYLOC NUT
SP58GB	SHACKLE PIN 5/8" GREASEABLE WITH NYLOC NUT, BLISTER
SP60	6 PIN SMALL ROUND PLASTIC TRAILER SOCKET IN POLY BAG
SP70	7 PIN SMALL ROUND PLASTIC TRAILER SOCKET IN POLY BAG
SP916	SHACKLE PIN 9/16" BLACK, WITH NYLOC NUT.
SP916B	SHACKLE PIN 9/16" BLACK, WITH NYLOC NUT, BLISTER
SP916G	SHACKLE PIN 9/16" BLACK GREASEABLE WITH NYLOC NUT.
SP916GB	SHACKLE PIN 9/16" BLACK GREASEABLE WITH NYLOC NUT, BLISTER
SPW6B	STAINLESS STEEL SPLIT PIN & WASHERS SUIT 16MM - 18MM BOAT ROLLER SPINDLES - SET OF 6 - IN BLISTER PACK
SS313	SLIPPER SPRING, 3 LEAF WITH 1/2" NYLON BUSH
SS313G	SLIPPER SPRING, 3 LEAF WITH 1/2" NYLON BUSH, GALVANISED
SS413	SLIPPER SPRING, 4 LEAF WITH 1/2" NYLON BUSH
SS413G	SLIPPER SPRING, 4 LEAF WITH 1/2" NYLON BUSH, GALVANISED
SS513	SLIPPER SPRING, 5 LEAF WITH 1/2" NYLON BUSH
SS513G	SLIPPER SPRING, 5 LEAF WITH 1/2" NYLON BUSH, GALVANISED
SS613	SLIPPER SPRING, 6 LEAF WITH 1/2" NYLON BUSH
SS613G	SLIPPER SPRING, 6 LEAF WITH 1/2" NYLON BUSH, GALVANISED
SS713	SLIPPER SPRING, 7 LEAF WITH 1/2" NYLON BUSH
SS713G	SLIPPER SPRING, 7 LEAF WITH 1/2" NYLON BUSH, GALVANISED
SSS16612	STAINLESS STEEL SLEEVE FOR CALIPER
ST12	1/2" X 1 5/8" HUB STUDS
ST12B	1/2" X 1 5/8" HUB STUDS & NUTS - SET OF 6 - IN BLISTER
ST716	7/16" X 1 5/8" HUB STUDS
ST716B	7/16" X 1 5/8" HUB STUDS & NUTS - SET OF 5 - IN BLISTER
SVL29	12V/10W HALOGEN SWIVEL LAMP, BULK
SW10	10" SOLID RUBBER WHEEL WITH STEEL RIM
SW8	8" SOLID RUBBER WHEEL WITH STEEL RIM.
TB178C	2270KG - 1 7/8" CHROME PLATED TOWBALL - SHANK SIZE 7/8" DIAM. X 52MM, BULK
TB3562C	3.5T. - 50MM CHROME PLATED TOWBALL - SHANK SIZE 7/8" DIAM. X 62MM, BULK
TB3562Z	3.5T. - 50MM ZINC PLATED TOWBALL - SHANK SIZE 7/8" DIAM. X 62MM, BULK
TB35BB	3.5T. - 50MM BLACK TOWBALL - SHANK SIZE 7/8" DIAM. X 52MM, IN DISPLAY PACK

ARK TRAILER ACCESSORIES



CODE NO.	DESCRIPTION
TB35C	3.5T. - 50MM CHROME PLATED TOWBALL - SHANK SIZE 7/8" DIAM. X 52MM, BULK
TB35CB	3.5T. - 50MM CHROME PLATED TOWBALL - SHANK SIZE 7/8" DIAM. X 52MM, IN DISPLAY PACK
TB4570	4500KG - 70MM STEEL TOWBALL - SHANK DIAM 1" 3/4, SHANK LENGTH 68MM
TB501	3500KG - 50MM CHROME PLATED TOWBALL - SHANK SIZE 1" DIAM. X 52MM, BULK
TB505	2000KG - 50MM CHROME PLATED TOWBALL - SHANK SIZE 1" DIAM. X 115MM , BULK
TB5080C	2500KG - 50MM CHROME PLATED TOWBALL - SHANK SIZE 7/8" DIAM. X 80MM BULK
TB50HR1	2000KG - 50MM CHROME PLATED TOWBALL - SHANK SIZE 7/8" DIAM. X 25MM HI-RISE, BULK
TBH160	50X50MM HITCH BALL MOUNT, 160MM FROM CENTRE OF HITCH PIN HOLE TO CENTRE OF TOWBALL HOLE
TBH190	50X50MM HITCH BALL MOUNT, 190MM FROM CENTRE OF HITCH PIN HOLE TO CENTRE OF TOWBALL HOLE
TBH280	50X50MM HITCH BALL MOUNT, 280MM FROM CENTRE OF HITCH PIN HOLE TO CENTRE OF TOWBALL HOLE
TBS41B	TOWBALL SPANNER, BLISTER
TGAB19	TAIL GATE ANTI RATTLE LATCH, BOLT TYPE - BULK
TGAB19B	TAIL GATE ANTI RATTLE LATCHES SET OF 2, BOLT TYPE WITH NYLOC NUTS - BLISTER
TGAW19	TAIL GATE ANTI RATTLE LATCH, WELD TYPE - BULK
TGAW19B	TAIL GATE ANTI RATTLE LATCHES SET OF 2, WELD TYPE - BLISTER
TGC60B	TAIL GATE CATCHES, RIGHT & LEFT SIDE, GOLD ZINC FINISH - BLISTER
TGC60L	TRAILER TAIL GATE CATCHER - LEFT SIDE
TGC60R	TRAILER TAIL GATE CATCHER - RIGHT SIDE
TGH100	TAIL GATE HINGE, LARGE, BLACK
TGH100B	TAIL GATE HINGES, LARGE SET OF 2, GOLD ZINC FINISH - BLISTER
TGH50	TAIL GATE HINGE, SMALL, BLACK
TGH50B	TAIL GATE HINGES, SMALL SET OF 2, ZINC FINISH - BLISTER
TH150	6" HUB - SUITS TOYOTA - HOLDEN BEARINGS, DUST COVER, SEAL & NUTS IN CARTON
TH150D	6" HUB - SUITS TOYOTA - HOLDEN BEARINGS, DUST COVER, SEAL & NUTS IN DISPLAY CARTON
TH150G	6" HUB - GALVANISED - SUITS TOYOTA - HOLDEN BEARINGS, DUST COVER, MARINE SEAL & NUTS
TH150GD	6" HUB - GALVANISED - SUITS TOYOTA - HOLDEN BEARINGS, DUST COVER, MARINE SEAL & NUTS IN DISPLAY CARTON
TK160C	TOW KIT: 3.5T. 50MM HITCH BALL MOUNT 160MM, 3.5T. 50MM CHROME TOWBALL, 3.5T. HITCH PIN & HITCH COVER IN CARRY CASE
TK190C	TOW KIT: 3.5T. 50MM HITCH BALL MOUNT 190MM, 3.5T. 50MM CHROME TOWBALL, 3.5T. HITCH PIN & HITCH COVER IN CARRY CASE

ARK TRAILER ACCESSORIES



CODE NO.	DESCRIPTION
TL984A	REAR COMBINATION LAMP - SUITABLE FOR RIGHT & LEFT SIDE - ACRYLIC LENS W/-GLOBES & CONNECTORS/BULK
TL984B	REAR COMBINATION LAMP - SUITABLE FOR RIGHT & LEFT SIDE - ACRYLIC LENS W/-GLOBES & CONNECTORS/BLISTER PACK
TLC984A	REAR COMBINATION LAMP - RIGHT SIDE - ACRYLIC LENS W/-GLOBES & CONNECTORS - BULK PACK
TLC984P	REAR COMBINATION LAMP - RIGHT SIDE - POLYCARBONATE LENS - GLOBES & CONNECTORS/BULK PACK
TLL984	POLYCARBONATE LENS TO SUIT TL984 LAMP - BULK
TLL984B	POLYCARBONATE LENS TO SUIT TL984 LAMP IN BLISTER PACK
TLR984A	REAR COMBINATION LAMP - LEFT SIDE - ACRYLIC LENS W/-GLOBES & CONNECTORS - BULK PACK
TLR984P	REAR COMBINATION LAMP - LEFT SIDE - POLYCARBONATE LENS - GLOBES & CONNECTORS/BULK PACK
TP/L	BLACK SHIN PROTECTOR WITH LOGO, BULK
TP11	BLACK SHIN PROTECTOR IN DISPLAY CARTON OF 18
TPB11	BLACK SHIN PROTECTOR IN BLISTER PACK
TRB15	1.5M TRAILER BOARD COMPLETE WITH 8M CABLE AND 7 PIN SMALL ROUND PLUG, BULK
TRB15F	1.5M TRAILER BOARD COMPLETE WITH 8M CABLE AND 7 PIN FLAT PLUG, BULK
TRB15L	1.5M TRAILER BOARD COMPLETE W/- 8M CABLE & 7 PIN LARGE ROUND PLUG, BULK
TRB185	1.85M TRAILER BOARD COMPLETE W/- 8 M CABLE & 7 PIN SMALL ROUND PLUG, BULK
TRB185F	1.85M TRAILER BOARD COMPLETE W/- 8 M CABLE & 7 PIN FLAT PLUG, BULK
TRB185L	1.85M TRAILER BOARD COMPLETE W/- 8 M CABLE & LPP7 PLUG
TRF35	SPARE WHEEL AND HUB/DISC HUB HOLDER, SUITS FORD BEARINGS - IN DISPLAY CARTON
TRH32	SPARE WHEEL AND HUB/DISC HUB HOLDER, SUITS HOLDEN BEARINGS - IN DISPLAY CARTON
UB2	2" U BOLT WITH NUTS AND SPRING WASHER - SET OF 2 - POLY BAG
UB2B	2" U BOLT WITH NUTS AND SPRING WASHER - SET OF 2 - BLISTER PACK
UB3	3" U BOLT WITH NUTS AND SPRING WASHER - SET OF 2 - POLY BAG
UB33	3" X 3" U BOLT WITH NUTS AND SPRING WASHER - SET OF 2 - NYLON BAG
UB33B	3" X 3" U BOLT WITH NUTS AND SPRING WASHER - SET OF 2 - BLISTER PACK
UB39	U BOLT 39MM TO SUIT 39MM ROUND AXLE, WITH NYLOC NUT, BLACK - BULK
UB39G	U BOLT 39MM TO SUIT 39MM ROUND AXLE, WITH NYLOC NUT, GALVANISED - BULK
UB39GB	U BOLT 39MM TO SUIT 39MM ROUND AXLE, SET OF 2, GALVANISED WITH NYLOC NUT, - BLISTER

TUFF SUPPORTS



PART	DESCRIPTION	YEAR	LOCATION	L/R	MONROE	L mm	S mm	F1 N
CANOPY								
17CTS3739	BRAHMA		REAR		ML4372	360	132	150
17CTS2273	CROWN		REAR		ML4369	510	206	200
17CTS3396	FLEETLINE		CANOPY		ML4371	410	165	300
17CTS3396	FLEETLINE		REAR		ML4371	410	165	300
17CTS3266	FLEXIGLASS		CANOPY		ML4414	432	175	130
17CTS3266	FLEXIGLASS		REAR		ML4414	432	175	130
17CTS3871	FLEXIGLASS		SIDE		ML4415	315	125	110
17CTS3244	GLASS TEK		CANOPY		ML4370	435	175	150
17CTS3244	GLASS TEK		REAR		ML4370	435	175	150
17CTS3739	VENTURA		REAR		ML4372	360	132	150
BMW								
17CTS3398	3 Series, E36 3201, 3251, CONVERTIBLE	93-99	BONNET		ML4457	411	185	280
17CTS3398	3 Series, E36 3201, 3251 2 DOOR COUPE	6/92-2/95	BONNET		ML4457	411	185	280
17CTS3398	3 Series, E36 316I, 318IS 2 DOOR COUPE	6/92-6/99	BONNET		ML4457	411	185	280
17CTS3398	3 Series, E36 320I, 325I, 325TD, 325TDS, Sedan	6/92-2/95	BONNET		ML4457	411	185	280
DAEWOO								
17CTS1814	1.5, ALL 3 DOOR, 4 DOOR, 5 DOOR, Hatch	94-6/95	HATCH		ML4413	550	250	370
17CTS1814	CIELO, GL, GLX, 3 & 5 DOOR, Hatch	94-7/98	HATCH		ML4413	550	250	370
17CTS2790	LANOS, ALL, Hatch	97-3/03	HATCH		ML4439	485	225	490
DAIHATSU								
17CTS1311	CHARADE, G11, G21, G30	1/83-87	HATCH	R	ML4423	590	250	540
17CTS1569	CHARADE, G100, 101, 102 Series (EX 4X4)	87-3/93	HATCH	R	ML4355	570	220	300
17CTS1570	CHARADE, G100, 101, 102 Series (EX 4X4), Hatch	87-3/93	HATCH	L	ML4356	570	220	300
17CTS1574	CHARADE, G100, 101, 102 Series (EX 4X4), Hatch	87-3/93	HATCH	R	ML4353	570	220	270
17CTS1575	CHARADE, G100, 101, 102 Series (EX4X4)	87-3/93	HATCH	L	ML4354	570	220	270
17CTS1307	CHARADE, G200, 202, 203 Series (EX F2)	3/93-8/96	HATCH		ML4458	590	270	290
FORD								
17CTS0076	ECONOVAN, 1400, 1800, 2000, 2200, Van	84-90	TAILGATE		ML4377	850	270	720
17CTS0184	ECONOVAN, 1400, 1800, 2000, 2200, Van	84-90	TAILGATE		ML4376	770	210	700
17CTS0076	ECONOVAN, 4WD, Van	90-10/97	TAILGATE		ML4377	850	270	720
17CTS0184	ECONOVAN, 4WD, Van	90-10/97	TAILGATE		ML4376	770	210	700
17CTS1538	EXPLORER, UN, UP ALL, 4WD	95-4/99	TAILGATE		ML4444	570	226	670
17CTS2396	FAIRLANE, ZK, ZL, Sedan	82-88	BONNET		ML1112	501	210	590
17CTS3010	FAIRLANE. NA. Sedan	88-8/92	BONNET		ML1332	465	223	580
17CTS3388	FAIRLANE, NA, Sedan	88-8/92	BOOT		ML4427	415	207	630
17CTS3010	FAIRLANE, NC, Sedan	9/92-95	BONNET		ML1332	465	223	580
17CTS3388	FAIRLANE, NC, Sedan	9/92-95	BOOT		ML4427	415	207	630
17CTS3372	FAIRLANE, NF, NL, Sedan	95-1/99	BOOT		ML4428	420	194	610
17CTS2394	FAIRLANE, AU, Sedan	2/99-6/00	BONNET		ML4431	501	213	320
17CTS2394	FAIRLANE AUII, AUIII, Sedan	6/00-5/03	BONNET		ML4431	501	213	320

TUFF SUPPORTS



PART	DESCRIPTION	YEAR	LOCATION	L/R	MONROE	L mm	S mm	F1 N
FORD continued								
17CTS2396	FALCON, FAIRMONT, XR, XT, XW, XY, XA XB, XC, XD, Sedan	66-82	BONNET		ML1112	501	210	590
17CTS2396	FALCON, FAIRMONT, XE, XF, Sedan	82-88	BONNET		ML1112	501	210	590
17CTS2780	FALCON, FAIRMONT, EA, Sedan	88-8/91	BONNET		ML1122	485	200	360
	FAIRMONT, EA, Sedan					338	153	370
17CTS3764	FALCON, FAIRMONT, EA, Sedan	88-8/91	BOOT		ML4383	337	132	360
17CTS2780	FALCON, FAIRMONT, EB, ED, Sedan	9/91-94	BONNET		ML1122	485	200	360
17CTS3751	FALCON, FAIRMONT, NT, EB, ED, Sedan	9/91-95	BOOT		ML1123	338	153	370
17CTS3764	FALCON, FAIRMONT, EB, ED, Sedan	9/91-96	BOOT		ML4383	337	132	360
17CTS2283	FALCON, FAIRMONT, EF, EL, Sedan	94-97	BONNET		ML4384	511	203	360
17CTS3764	FALCON, FAIRMONT, EF, EL, Sedan	94-97	BOOT		ML4383	337	132	360
17CTS2394	FALCON, FAIRMONT, AU, AUII, AUIII, Sedan	8/98-9/02	BONNET		ML4431	501	213	320
17CTS3379	FALCON, FAIRMONT, AU, AUII, AUIII, Sedan	8/98-9/02	BOOT		ML4432	417	170	290
17CTS2780	FALCON, TICKFORD, EB, ED, Sedan	8/91-7/94	BONNET		ML1122	485	200	360
17CTS2283	FALCON, TICKFORD, EF, EL, Sedan	8/94-9/98	BONNET		ML4384	511	203	360
17CTS2394	FALCON, TICKFORD, AU, AUII, AUIII, Sedan	8/98-2/03	BONNET		ML4431	501	213	320
17CTS3379	FALCON, TICKFORD, AUII, AU III, Sedan	4/00-2/03	BOOT		ML4432	417	170	290
17CTS2396	FALCON, XD, XE, XF, XG, UTE & Van	80-3/96	BONNET		ML1112	501	210	590
17CTS1962	FALCON, XH, UTE & Van	4/96-6/99	BONNET		ML4221	541	235	310
17CTS2394	FALCON, AU, AUII, AUIII, UTE	7/99-10/02	BONNET		ML4431	501	213	320
17CTS1554	FALCON, FAIRMONT, XR, XT, XW, XY, XA XB, XC, XD, Wagon	66-82	TAILGATE		ML1111	570	243	500
17CTS2396	FALCON, FAIRMONT, XR, XT, XW, XY, XA XB, XC, XD, Wagon	66-82	BONNET		ML1112	501	210	590
17CTS2396	FALCON, FAIRMONT, XE, XF, Wagon	82-88	BONNET		ML1112	501	210	590
17CTS1554	FALCON, FAIRMONT, XE, XF, Wagon	82-88	TAILGATE		ML1111	570	243	500
17CTS2780	FALCON, FAIRMONT, EA, Wagon	88-8/91	BONNET		ML1122	485	200	360
17CTS1843	FALCON, FAIRMONT, EA, Wagon	88-8/91	TAILGATE		ML1121	550	241	500
17CTS2780	FALCON, FAIRMONT, EB, ED, Wagon	9/91-94	BONNET		ML1122	485	200	360
17CTS1843	FALCON, FAIRMONT, EB, ED, Wagon	9/91-94	TAILGATE		ML1121	550	241	500
17CTS2283	FALCON, FAIRMONT, EF, EL, Wagon	94-97	BONNET		ML4384	511	203	360
17CTS1556	FALCON, FAIRMONT, EF, EL, Wagon	94-97	TAILGATE		ML4380	570	242	500
17CTS2394	FALCON, FAIRMONT, AU, AUII, AUIII, Wagon	8/98-9/02	BONNET		ML4431	501	213	320
17CTS1716	FALCON, FAIRMONT, AU, AUII, AUIII, Wagon	8/98-9/02	TAILGATE		ML4433	557	255	450
17CTS1716	FALCON, FAIRMONT, BA, Wagon	9/02-	TAILGATE		ML4433	557	255	450
17CTS2283	FALCON, TICKFORD, EF, Wagon	9/94-10/95	BONNET		ML4384	511	203	360
17CTS1556	FALCON, TICKFORD, EF, Wagon	9/94-10/95	TAILGATE		ML4380	570	242	500
17CTS2698	FESTIVA, WB, WD, WE, Hatch	94-4/01	HATCH		ML4420	495	218	440
17CTS2699	FESTIVA, WB, WD, WF, Hatch	94-4/01	HATCH		ML4421	495	218	440
17CTS0351	LASER, KA, KB, Hatch	81-10/85	HATCH		ML4408	700	280	300
17CTS0352	LASER, KA, KB, Hatch	81-10/85	HATCH		ML4409	700	280	300
17CTS0354	LASER, KA, KB, Hatch	81-10/85	HATCH		ML4406	700	280	260
17CTS0355	LASER, KA, KB, Hatch	81-10/85	HATCH		ML4407	700	280	260
17CTS0564	LASER, KC, KE, Hatch	10/85-89	HATCH		ML1214	670	250	290
17CTS0568	LASER, KC, KE, Hatch	10/85-89	HATCH		ML1222	670	242	380

TUFF SUPPORTS



PART	DESCRIPTION	YEAR	LOCATION	L/R	MONROE	L mm	S mm	F1 N
FORD continued								
17CTS0887	LASER, KF, KH, Hatch	89-94	HATCH		ML4326	618	245	410
17CTS0726	LASER, KJ, KL, Hatch	94-2/99	HATCH		ML4396	640	290	380
17CTS0727	LASER, KJ, KL, Hatch	94-2/99	HATCH		ML4397	640	290	380
17CTS1394	LASER, KN, Hatch	2/99-4/01	HATCH		ML4448	580	252	440
17CTS2396	LTD, LANDAU, FD, FE, Sedan	82-88	BONNET		ML1112	501	210	590
17CTS3010	LTD, LANDAU, DA, Sedan	88-6/93	BONNET		ML1332	465	223	580
17CTS3388	LTD, LANDAU, DA, Sedan	88-6/93	BOOT		ML4427	415	207	630
17CTS3010	LTD, LANDAU, DC, Sedan	7/93-95	BONNET		ML1332	465	223	580
17CTS3388	LTD, LANDAU, DC, Sedan	7/93-95	BOOT		ML4427	415	207	630
17CTS3372	LTD, LANDAU, DF, Sedan	95-9/96	BOOT		ML4428	420	194	610
17CTS3372	LTD, LANDAU, DL, Sedan	10/96-7/99	BOOT		ML4428	420	194	610
17CTS2394	LTD, LANDAU, AU, AUII, Sedan	2/99-5/03	BONNET		ML4431	501	213	320
17CTS0351	TELSTAR, AR, AS, Hatch	83-4/87	HATCH	R	ML4408	700	280	300
17CTS0352	TELSTAR, AR, AS, Hatch	83-4/87	HATCH	L	ML4409	700	280	300
17CTS0354	TELSTAR, AR, AS, Hatch		HATCH	R	ML4406	700	280	260
17CTS0355	TELSTAR, AR, AS, Hatch	83-4/87	HATCH	L	ML4407	700	280	260
17CTS0642	TELSTAR, AT, AV, Hatch	11/87-1/92	HATCH	R	ML4387	650	280	350
17CTS0643	TELSTAR, AT, AV, Hatch	11/87-1/92	HATCH	L	ML4388	650	280	350
17CTS2687	TELSTAR, AX, AY, Hatch				ML4429	495	187	730
HOLDEN								
17CTS2016	APOLLO, JK, JL, Wagon	87-92	TAILGATE		ML4425	535	240	520
17CTS3658	APOLLO, JM, JP, Sedan & Wagon	92-6/97	BONNET		ML4331	366	145	380
17CTS1022	APOLLO, JM, JP, Wagon	92-6/97	TAILGATE		ML4338	610	255	470
17CTS0198	ASTRA, LB, LC, ALL	84-87	HATCH	L	ML4316	740	329	270
17CTS0199	ASTRA, LB, LC, ALL	84-87	HATCH	R	ML4317	740	329	270
17CTS0206	ASTRA, LB, LC, ALL	84-87	HATCH	L	ML4404	740	329	210
17CTS0207	ASTRA, LB, LC, ALL	84-87	HATCH	R	ML4405	740	329	210
17CTS1962	ASTRA, LD, Hatch	87-89	HATCH		ML4221	541	235	310
17CTS2139	ASTRA, TS, Hatch	9/98-7/04	HATCH		ML4222	525	225	460
17CTS0926	BARINA, MF, MG, MH, Hatch	89-94	HATCH	R	ML4416	615	288	200
17CTS0927	BARINA, MF, MG, MH, Hatch	89-94	HATCH	L	ML4417	615	288	200
17CTS1814	BARINA, SB, Hatch	94-4/01	HATCH		ML4413	550	250	370
17CTS1080	CAMIRA, JB, JD, JE, Wagon	82-88	TAILGATE		ML2201	604	267	710
17CTS3264	COMMODORE, VB, VC, VH, VK, VL, VN, VP, Sedan	78-93	BOOT		ML2413	432	185	100
17CTS2058	COMMODORE, VR, VS, Sedan	93-7/97	BONNET		ML4340	532	208	340
17CTS3562	COMMODORE, VR, VS, Sedan	93-7/97	BOOT		ML4341	374	145	530
17CTS3564	COMMODORE, VR, VS, Sedan	93_7/97	BOOT		ML4339	374	145	460
17CTS2207	COMMODORE, VT, VX, VXII, VY, VYII, Sedan	8/97-7/04	BONNET		ML4398	517	210	290
17CTS3744	COMMODORE, VT, VX, VXII, VY, VYII, Sedan	8/97-8/03	BOOT		ML4399	341	98	630
17CTS3743	COMMODORE, VX, VXII, VY, VYII, Sedan	10/00-8/03	BOOT		ML4447	341	118	155
17CTS3562	COMMODORE, HSV, VR, VS, Sedan	94-7/97	BOOT		ML4341	374	145	153
17CTS2207	COMMODORE, HSV VX, Sedan	10/00-10/02	BONNET		ML4398	517	210	290
17CTS3743	COMMODORE, HSV, VX, Sedan	10/00-10/02	BOOT		ML4447	341	118	550
17CTS3744	COMMODORE, HSV VX, Sedan	10/00-10/02	BOOT		ML4399	341	98	630

TUFF SUPPORTS



PART	DESCRIPTION	YEAR	LOCATION	L/R	MONROE	L mm	S mm	F1 N
MAZDA								
17CTS0342	323 RWD, 1300, 1400, Sedan	77-5/80	HATCH		ML4323	702	284	271
17CTS0351	323 FWD, BD10, Hatch	6/80-7/85	HATCH	R	ML4408	700	280	300
17CTS0352	323 FWD, BD10, Hatch	6/80-7/85	HATCH	L	ML4409	700	280	300
17CTS0354	323 FWD, BD10, Hatch	6/80-7/85	HATCH	R	ML4406	700	280	260
17CTS0355	323 FWD, BD10, Hatch	6/80-7/85	HATCH	L	ML4407	700	280	260
17CTS0564	323 FWD, BF10, Hatch	7/85-89	HATCH		ML1214	670	250	290
17CTS0568	323 FWD, BF10, Hatch	7/85-89	HATCH		ML1222	670	242	380
17CTS2804	323 FWD, BG, Hatch	89-7/94	HATCH		ML4438	484	214	400
17CT51922	323 FWD, BA1, Hatch	7/94-9/98	HATCH		ML4445	545	245	420
17CTS0351	626 FWD, GC, Hatch	83-4/87	HATCH	R	ML4408	700	280	300
17CTS0352	626 FWD, GC, Hatch	83-4/87	HATCH	L	ML4409	700	280	300
17CTS0354	626 FWD, GC, Hatch	83-4/87	HATCH	R	ML4406	700	280	260
17CTS0355	626 FWD, GC, Hatch	83-4/87	HATCH	L	ML4407	700	280	260
17CTS0643	626 FWD, GD, Hatch	5/87-12/91	HATCH	L	ML4388	650	280	350
17CTS0642	626 FWD, GD, Hatch	5/87-12/91	HATCH	R	ML4387	650	280	350
17CTS2687	626 FWD, GE, Hatch	12/91-7/97	HATCH		ML4429	490	187	730
17CTS0076	E Series, E1400, E1800, E2000, E2200, Van	84-10/97	TAILGATE		ML4377	850	270	720
17CTS0184	E Series, E1400, E1800, E2000, E2200, Van	84-10/97	TAILGATE		ML4376	770	210	700
MITSUBISHI								
17CTS0875	COLT, RA, RB, RC, RD, RE, Hatch	80-90	HATCH	R	ML4351	620	230	250
17CTS0876	COLT, RA, RB, RC, RD, RE, Hatch	80-90	HATCH	L	ML4352	620	230	250
17CTS0300	L300, SA, SB, SC, SD, SE, 4WD, EXPRESS Van	81-10/86	TAILGATE		ML4375	720	260	660
17CTS0356	L300, SF, SG, SH, STARWagon, EXPRESS Van	11/86-12/94	TAILGATE		ML4424	700	230	713
17CTS0132	L300, SF, SG, SH, STARWagon, EXPRESS Van	11/86-12/94	TAILGATE		ML4378	805	240	750
17CTS0100	L300, SJ, WA, STARWagon, EXPRESS Van	12/94-11/03	TAILGATE		ML4443	822	259	750
17CT52291	LANCER, CA, CB, Hatch	88-92	HATCH		ML4324	508	228	460
17CTS2232	LANCER, CC, Hatch	92-12/95	HATCH		ML4459	515	240	410
17CTS3046	MAGNA, TR, TS, Sedan	91-3/96	BONNET		ML4418	458	278	390
17CTS2394	MAGNA, TE, TF, TH, Sedan	4/96-8/00	BONNET		ML4431	501	213	320
17CTS2058	MAGNA, TJ TJII, Sedan	8/00-5/03	BONNET		ML4340	532	208	340
17CTS0631	MAGNA, TN, TP, Wagon	85-4/92	TAILGATE	R	ML4342	660	270	400
17CTS0632	MAGNA, TN, TP, Wagon	85-4/92	TAILGATE	L	ML4343	660	270	400
17CTS3046	MAGNA, TR, TS, Wagon	4/92-97	BONNET		ML4418	458	278	390
17CTS1684	MAGNA, TR, TS, Wagon	4/92-97	TAILGATE		ML3112	563	236	450
17CTS2394	MAGNA, TE, TF, Wagon	6/97-2/99	BONNET		ML4431	501	213	320
17CTS1719	MAGNA, TE, TF, Wagon	6/97-2/99	TAILGATE		ML4401	558	237	510
17CTS2394	MAGNA, TH, Wagon	3/99-8/00	BONNET		ML4431	501	213	320
17CTS1719	MAGNA, TH, Wagon	3/99-8/00	TAILGATE		ML4401	558	237	510
17CTS2058	MAGNA, TJ, TJII, Wagon	8/00-5/03	BONNET		ML4340	532	208	340
17CTS1719	MAGNA, TJ, TJII, Wagon	8/00-5/03	TAILGATE		ML4401	558	237	510
17CTS3047	MIRAGE, CE Hatch	7/96-7/02	HATCH		ML4419	458	205	230

TUFF SUPPORTS



PART	DESCRIPTION	YEAR	LOCATION	L/R	MONROE	L mm	S mm	F1 N
mitsubishi continued								
17CTS0626	SIGMA, GE, Wagon	77-80	TAILGATE	R	ML4349	660	280	450
17CTS0627	SIGMA, GE, Wagon	77-80	TAILGATE	L	ML4350	660	280	450
17CTS0626	SIGMA, GJ, GK, GN, Wagon	82-87	TAILGATE	R	ML4349	660	280	450
17CTS0627	SIGMA, GJ, GK, GN, Wagon	82-87	TAILGATE	L	ML4350	660	280	145
17CTS2394	VERADA, KE, KF, KH, Sedan	10/96-8/00	BONNET		ML4431	501	213	320
17CTS2058	VERADA, KJ, KJII, Sedan	8/00-5/03	BONNET		ML4340	532	208	340
17CTS1684	VERADA, KR, KS, Wagon	4/92-9/96	TAILGATE		ML3112	563	236	450
17CTS2394	VERADA, KE, KF, KH, Wagon	6/97-8/00	BONNET		ML4431	501	213	320
17CTS1719	VERADA, KE, KF, KH, Wagon	6/97-8/00	TAILGATE		ML4401	558	237	510
17CTS2058	VERADA, KJ, KJI1, Wagon	8/00-5/03	BONNET		ML4340	532	208	340
17CTS1719	VERADA, KJ, KJII, Wagon	8/00-5/03	TAILGATE		ML4401	558	237	510
NISSAN								
17CTS0350	BLUEBIRD, 910, Wagon	81-86	TAILGATE		ML4434	700	330	420
17CTS0302	NOMAD, C22, Van		TAILGATE		ML4373	720	260	680
17CTS0308	NOMAD, C22, Van		TAILGATE		ML4374	720	260	570
17CTS1326	PATHFINDER, WD21, 4WD	86-95	TAILGATE		ML4328	587	245	494
17CTS3401	PATROL, GU, GUII, 4WD	12/97-on	BONNET		ML4337	407	150	355
17CTS0884	PINTARA, R31, Wagon	6/86-90	TAILGATE		ML4311	618	253	410
17CTS0935	PINTARA, R31, Wagon	6/86-90	TAILGATE	R	ML4381	615	250	370
17CTS0936	PINTARA, R31 Wagon	6/86-90	TAILGATE	L	ML4382	615	250	370
17CTS2276	PULSAR, N10, Hatch	81-83	HATCH		ML4440	510	182	230
17CTS0198	PULSAR, N12, Hatch	83-87	HATCH	L	ML4316	740	329	270
17CTS0206	PULSAR, N12, Hatch	83-87	HATCH	L	ML4404	740	329	210
17CTS0207	PULSAR, N12, Hatch	83-87	HATCH	R	ML4405	740	329	210
17CTS0199	PULSAR, N12, Hatch	83-87	HATCH	R	ML4317	740	329	270
17CTS1962	PULSAR, N13, Hatch	87-91	HATCH		ML4221	541	235	310
17CTS2139	PULSAR, N14, Hatch	91-95	HATCH		ML4222	525	225	460
17CTS2831	PULSAR, N15, Hatch	9/95-6/00	HATCH	R	ML4436	480	220	380
17CTS2832	PULSAR, N15, Hatch	9/95-6/00	HATCH	L	ML4437	480	220	380
17CTS0935	SKYLINE, R31, Wagon	6/80-91	TAILGATE	R	M1-4381	615	250	370
17CTS0936	SKYLINE, R31, Wagon	6/80-91	TAILGATE	L	ML4382	615	250	370
17CTS0884	SKYLINE, R31, Wagon	6/86-91	TAILGATE		ML4311	618	253	410
17CTS0656	URVAN,E23, E24, Van	81-93	TAILGATE		ML4367	645	290	550
17CTS0302	VANETTE, C22, Van	87-93	TAILGATE		ML4373	720	260	680
17CTS0308	VANETTE, C22, Van	87-93	TAILGATE		ML4374	720	260	570
SUBARU								
17CTS0771	FORESTER, 2.0, 2.5, Wagon 4WD	7/97-1/00	TAILGATE	R	ML4449	628	275	410
17CTS0772	FORESTER, 2.0, 2.5, Wagon 4WD	7/97-1/00	TAILGATE	L	ML4450	628	275	410
17CTS0174	L Series, Wagon	9/84-93	TAILGATE	L	ML4364	775	320	400
17CTS0175	L Series, Wagon	9/84-93	TAILGATE	R	ML4363	775	320	400
17CTS0311	LEONE, Wagon 4WD	10/79-8/84	TAILGATE	R	ML4357	720	320	350
17CTS0312	LEONE, Wagon 4WD	10/79-8/84	TAILGATE	L	ML4358	720	320	350
17CTS1811	LIBERTY, GEN II, Wagon	1/94-10/98	TAILGATE		ML4455	550	250	700
17CTS1811	LIBERTY, GEN II, Wagon	1/94-10/98	TAILGATE		ML4455	550	250	700
17CTS1984	OUTBACK, Wagon	98-on	HATCH		ML4456	540	245	720

TUFF SUPPORTS



PART	DESCRIPTION	YEAR	LOCATION	L/R	MONROE	L mm	S mm	F1 N
SUZUKI								
17CTS0926	SWIFT, ZF310- 1000, ZF413 -1300, GTI, Hatch	88-97	HATCH	R	ML4416	615	288	200
17CTS0927	SWIFT, ZF310-1000, ZF413 -1300, GTI, Hatch	88-97	HATCH	L	ML4417	615	288	200
TOYOTA								
17CTS0418	CAMRY, SV10, SV11, Hatch	3/83-86	HATCH		IML4334	695	280	419
17CTS3658	CAMRY, SDV10, SXV10, Sedan	92-95	BONNET		ML4331	366	145	380
17CTS3658	CAMRY, SXV10, Sedan	1/96-7/97	BONNET		ML4331	366	145	380
17CTS3583	CAMRY, SXV20R, MCV20R, Sedan	8/97-9/02	BONNET		ML4435	370	147	540
17CTS2016	CAMRY, SV20, SV21, SV22, Wagon	87-92	TAILGATE		ML4425	535	240	520
17CTS1022	CAMRY, SDV10, SXV10, Wagon	92-7/97	TAILGATE		ML4338	610	255	470
17CTS3658	CAMRY, SDV10, SXV10, Wagon	92-7/97	BONNET		ML4331	366	145	380
17CTS3583	CAMRY, SXV20R, MCV20R, Wagon	8/97-9/02	BONNET		ML4435	370	147	540
17CTS0570	CELICA, RA40, TA40, Hatch	8/77-7/81	HATCH		ML4314	657	242	290
17CTS0570	CELICA, RA60, Hatch	8/81-8/83	HATCH		ML4314	670	242	290
17CTS3192	CELICA, AT160, ST162, COUPE	8/85-9/89	BOOT		ML4422	440	195	137
17CTS0648	CELICA, AT160, ST162, LIFTBACK	8/85-9/89	HATCH		ML4402	650	235	300
17CTS0172	CELICA, AT180, ST182, RT184, ST184, Hatch	10/89-94	HATCH		ML4426	775	328	300
17CTS1260	CELICA, AT200, ST202, ST204, Hatch	94-10/99	HATCH		ML4446	595	230	350
17CTS0108	COROLLA, KE70, AE71, Wagon & Van	81-85	TAILGATE		ML4320	818	453	410
17CTS1460	COROLLA, AE80, AE82, Hatch	10/84-89	HATCH		ML4321	577	263	350
17CTS0108	COROLLA, AE80, AE82, LIFTBACK	10/84-89	LIFTBACK		ML4320	818	453	410
17CTS1308	COROLLA, AE92, AE93, Hatch	89-94	HATCH		ML4390	590	235	300
17CTS1022	COROLLA, AE100, AE101, AE102, EE100, Hatch	94-11/99	HATCH		ML4338	610	255	470
17CTS2496	COROLLA, AE112, AE112R, Hatch	10/98-12/01	HATCH		ML4441	500	210	595
17CTS1182	CORONA, XT130W, XT131, Wagon	80-83	TAILGATE		ML4346	600	270	370
17CTS0928	CORONA, ST141, Wagon	8/83-10/85	TAILGATE		ML4411	615	250	360
17CTS0358	HI-ACE, LH50, LH60, LH70, YH50, YH60, YH70, Van	12/82-9/89	TAILGATE		ML4410	700	220	820
17CTS0034	HI-ACE, RZH100, LH100, Van	88-98	TAILGATE		ML4366	885	280	900
17CTS0204	HI-ACE, RZH100, LH100, Van	88-on	TAILGATE		ML4365	765	280	850
17C1S3396	LANDCRUISER, F.160, FJ62, HJ60, H361, 4WD	8/80-90	TAILGATE		ML4371	410	165	300
17C1S2978	LANDCRUISER, FJ80, FZJ80, HDJ80, HZJ80, 4WD	90-3/98	TAILGATE		ML4379	465	170	390
17CTS3264	LEXCEN, VN, VP, Sedan	89-93	BOOT		ML2413	432	185	100
17CTS2058	LEXCEN, VR, VS, Sedan	93-5/96	BONNET		ML4340	532	208	340
17CTS3564	LEXCEN, VR, VS, Sedan	93-5/96	BOOT		ML4339	374	145	460
17CTS3562	LEXCEN, VR, VS, Sedan	93-S/96	BOOT		ML4341	374	145	530
17CTS2294	LEXCEN, VN, VP, Wagon	89-93	TAILGATE		ML2311	508	200	460
17CTS2058	LEXCEN, VR, VS, Wagon	93-5/96	BONNET		ML4340	532	208	340
17CTS2294	LEXCEN, VR, VS, Wagon	93-5/96	TAILGATE		ML2311	508	200	460

TYRE PRESSURE MONITORS



CODE	APPLICATION	QTY
2CTPMS405	TYRE PRESSURE MONITOR LCD All weather detection. LCD display. User friendly operation. Measures the pressure of all 4 tyres continuously in PSI. Wireless operation with highly sensitive receiver.	each
2CTP32M	TYRE PRESSURE INDICATOR (32PSI)	set
2CTP36M	TYRE PRESSURE INDICATOR (36PSI)	set

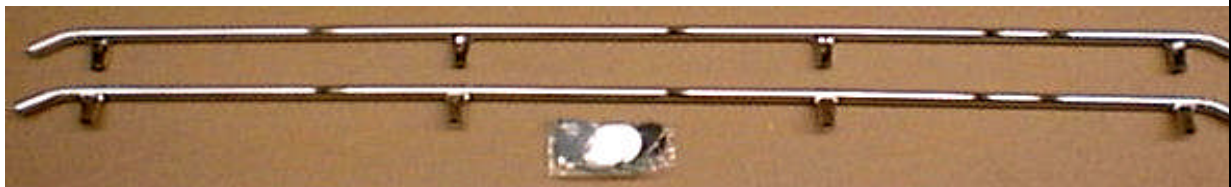
UNIBAR

All aluminium - driving light mounting bar



CODE	APPLICATION	QTY
	<i>All aluminium construction with polished chrome front bar and powder coated mounting plate</i>	
54UB10	UNIVERSAL LIGHT MOUNTING BAR	each

UTE TIE RAILS



CODE	APPLICATION	QTY
UTE TIE RAILS		
61SA4RR	FOUR POST ROPE RAIL CHROME (HOLDEN) 155cm	pair
61SA5RR	FIVE POST ROPE RAIL CHROME (FORD) 173cm	pair